

VIBRATION SOLUTIONS

1 PNEUMATIC
PRODUCTS

2024
VIBCO
60
YEARS

VIBCO®

VIBRATORS

SOLVING MATERIAL FLOW & COMPACTION SINCE 1962

PNEUMATIC VIBRATORS ON THE JOB APPLICATIONS



Above: Each time the hopper needs to empty, the VIBCO **VS-320** Pneumatic Turbine vibrator (as seen on page 10) is activated to ensure a complete clearing of the hopper. Its walls will stay totally clean and the correct amount of material will be consistently dispensed.



Above: Mounting this **50-2** unit (as seen on page 24). When mounted on a hopper it will help to create consistent flow of material. It aids in reducing overall batch times on the scale and in dispensing an accurately measured, consistent batch. No more labor time wasted banging on the hopper walls to release stuck material.



Above: The patented **SVR** design (page 30-31) shown in the dust collectors of this power plant, have a dB reading of 95-110. They are also available in a silent version which brings the dB down to 80-85.



Above: A **PC-3500 Big Buster** (see page 34-35 and 58-59) shakes a railroad hopper car with its high force and low frequency. It easily clamps to the railcar and can be moved from place to place.

PNEUMATIC VIBRATOR SECTION

TURBINE VIBRATORSpages 8-21



- ▶ **BVS Series** Ideal for food & pharma, uses non-lubricated air supply
New BVS-190PLAS and BVS-160PLAS
- ▶ **VS Series** Ideal for material conveying, continuous duty, 900 lbs. of force
- ▶ **CC Series** Ideal for precast with high force & no lubrication needed.
- ▶ **MLT/MHI Series** Aluminum body ideal for clean areas - high speed sealed bearings
- ▶ **STV Series** Sanitary, totally enclosed and washdown safe for Food and Pharma
- ▶ **MLTSS Series** Stainless steel body handles sanitary and harsh chemical environments
- ▶ **BBS Series** Smallest turbine vibrator in aluminum housing with versatile mount
- ▶ **GIO Series** Glass filled nylon housing has excellent resistance to solvents.
- ▶ **FBS Series** Designed for intermittent duty for match plate with versatile mount

BALL VIBRATORSpages 22-23



- ▶ **BB Series** With it's threaded exhaust, it pipes away oily exhaust air, produces small to medium vibration
- ▶ **BV Series** Continuous operation, withstands temperatures up to 350° with air pressure of 5-10 psi
- ▶ **V Series** (Shown left) producing up to 600 lbs. at 10,000 VPM, can be used in high temperatures

PISTON VIBRATORS.....pages 24-29



- ▶ **Model 50** (Shown in photo) High impact, linear force in a steel body, long life
- ▶ **Model 55** Cast iron, sturdy housing ideal for bins, chutes, weigh batchers, & more
- ▶ **Model LI** Adjustable impacts on this high energy impactor for bins, chutes, & more
- ▶ **Model MP** Mini piston with high force to weight, for small hoppers, bins, feeders
- ▶ **Model 10, 30, 40, 70, 80** End mounted pistons a variety of options for many applications

HIGH FREQUENCY VIBRATORSpages 30-33



- ▶ **SVR Series** (Shown in photo w/o lug bracket) Conventional model, high frequency
- ▶ **SVRL Series** Uses lug bracket for easy portability - high force, high frequency
- ▶ **SVRS Series** Patented silent model with a dB reading of 80 to 85
- ▶ **SVRX Series** Fits every concrete form system on the market today

PNEUMATIC & HYDRAULIC VIBRATORSpages 34-35



- ▶ **PF Series** Big Buster pneumatic - precise speed control allows "tuning" of vibrator
- ▶ **HF Series** Big Buster hydraulic - ideal for tough jobs like railroad cars and bins
- ▶ **PC Series** Big Buster pneumatic built in clamp
- ▶ **HC Series** Big Buster hydraulic built in clamp
- ▶ **HLF Series** (Shown in photo) Small version of Big Buster
- ▶ **HL Series** Small version of Big Buster for lug bracket
- ▶ **B Series** Hydraulic version ideal for O.E.M. equipment

HEAVY DUTY TURBINE "SILENT" PNEUMATIC VIBRATORS



- Heavy Duty Series, High Force Output
- Threaded Exhaust Port
- Large Bearings for Long Service Life
- Outlasts Piston Vibrators 3 to 1
- Quiet, Meets OSHA Standards (noise exposure below 85 decibels averaged over 8 working hours)
- No Lubrication Required
- Call for High Speed / High Temp / High Amplitude

SERIES BVS - Introducing the BVS Series by VIBCO - the perfect solution for extra heavy-duty vibration needs. With 9 models to choose from, these turbine vibrators are designed for industries where oil exhaust is undesirable, such as food and pharmaceutical. The BVS Series features non-lubricated air supply and a threaded exhaust port for closed, sanitized systems. With large amplitudes and customizable casting options, these vibrators are ideal for quickly moving parts or materials. Trust VIBCO's BVS Series for reliable and efficient vibration solutions.

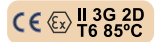
Ask for
Catalog
#9127



With its high force output, a BVS unit can easily move tough industrial materials in sturdy hoppers like the BVS 160 shown above. The air fitting on top helps with the flow.



Technical Data

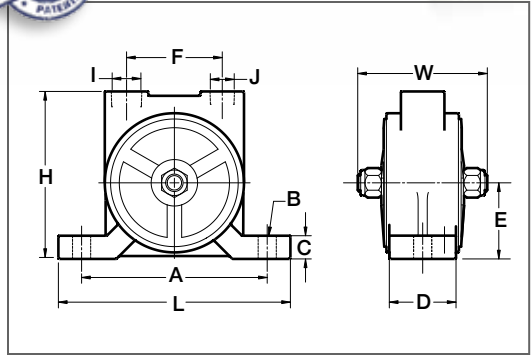


| Model | Weight*** | | 60 PSI (4 Bar) | | | | 80 PSI (5.5 Bar) | | | | Sound* | Max. Weight** of Material in Bin Slope Area | |
|--------------------|-----------|---------|--------------------|--------------------|-------------------|--------------------|--------------------|-------------------|-------|---------|--------|---|--------|
| | lbs. | kg. | Vibration per min. | Cubic ft. per min. | Centrifugal Force | Vibration per min. | Cubic ft. per min. | Centrifugal Force | lbs. | Newtons | | lbs. | kg. |
| BVS-60 | 0.4 | 0.2 | 10,000 | 2.5 | 20 | 90 | — | — | — | — | 66 | 200 | 90 |
| BVS-130 | 0.6 | 0.3 | 7,500 | 2.5 | 45 | 195 | 10,500 | 5.5 | 75 | 335 | 67 | 750 | 340 |
| BVS-160 | 3.0 | 1.4 | 9,500 | 4.0 | 120 | 530 | 12,000 | 7.0 | 160 | 710 | 70 | 1,600 | 725 |
| BVS-190 | 3.5 | 1.6 | 7,000 | 6.0 | 160 | 710 | 12,000 | 7.5 | 270 | 1,200 | 71 | 2,700 | 1,230 |
| BVS-250, BVS-250AL | 5.3/3.5 | 2.4/1.6 | 7,000 | 6.0 | 250 | 1,110 | 12,000 | 7.5 | 480 | 2,135 | 72 | 4,800 | 2,180 |
| BVS-320 | 8.0 | 3.6 | 5,000 | 12.0 | 395 | 1,750 | 6,000 | 15.5 | 600 | 2,670 | 70 | 6,000 | 2,730 |
| BVS-380 | 13.1 | 6.0 | 4,200 | 13.0 | 545 | 2,415 | 5,600 | 16.5 | 670 | 2,980 | 74 | 6,700 | 3,845 |
| BVS-510, BVS-510AL | 16.0/12.0 | 7.3/5.4 | 5,200 | 16.0 | 710 | 3,165 | 6,600 | 20.5 | 900 | 4,005 | 77 | 9,000 | 4,080 |
| BVS-570 | 23.0 | 10.4 | 2,800 | 23.5 | 850 | 3,790 | 4,000 | 29.5 | 1,050 | 4,670 | 83 | 10,500 | 4,775 |
| BVST-4400 | 22.0 | 10.0 | 11,000 | 28.0 | 2,700 | 12,010 | 12,500 | 30.0 | 3,500 | 15,570 | 92 | 35,000 | 15,875 |

* Decibel from A-scale at 1 meter and 80 PSI (or maximum listed value)
 ** Rule of thumb for sizing: One lb. vibrator force to each 10 lbs. of bin content at 80 PSI (or maximum listed value)
 *** First weight is cast iron housing/second weight is Aluminum (AL) signifies aluminum housing

NOTE: • Data obtained on laboratory test block
 • Frequency and force will decrease on less rigid mount
 • Data subject to design changes

VIBCO BVS SERIES THREADED EXHAUST PORT



Right: VIBCO's standard finish is shown but the BVS is also available in a variety of food-grade and sanitary finishes like bakers enamel and poly (stainless steel and aluminum models are available) and advanced composites.

Dimensions

| Model | L | | W | | H | | A** | | B* | | C | | D | | E | | F | | I | J |
|-----------|---------|-----|--------|-----|---------|-----|-----|-----|-----|----|-------|----|---------|----|---------|----|--------|-----|-----|-----|
| | in. | mm | in. | mm | in. | mm | in. | mm | in. | mm | in. | mm | in. | mm | in. | mm | in. | mm | NPT | NPT |
| BVS-60 | 3-13/16 | 97 | 1-5/8 | 41 | 2-7/16 | 62 | 3 | 76 | 1/4 | 6 | 5/8 | 16 | 3/4 | 19 | 1-3/16 | 30 | 1-1/4 | 32 | 1/8 | 1/8 |
| BVS-130 | 4-7/8 | 124 | 1-7/8 | 48 | 2-5/8 | 67 | 4 | 102 | 3/8 | 10 | 5/8 | 16 | 7/8 | 22 | 1-1/4 | 32 | 1-7/16 | 37 | 1/8 | 1/4 |
| BVS-160 | 5-1/2 | 140 | 2-7/8 | 73 | 3-5/8 | 93 | 4 | 102 | 3/8 | 10 | 9/16 | 14 | 1-3/8 | 35 | 1-11/16 | 43 | 1-7/8 | 48 | 1/4 | 3/8 |
| BVS-190 | 5-1/4 | 133 | 3-1/16 | 81 | 3-7/16 | 87 | 4 | 102 | 3/8 | 10 | 7/8 | 22 | 1-5/16 | 33 | 1-9/16 | 40 | 1-7/8 | 48 | 1/4 | 3/8 |
| BVS-250 | 6-3/4 | 171 | 3-9/16 | 90 | 3-15/16 | 100 | 5 | 127 | 1/2 | 13 | 7/8 | 22 | 1-3/8 | 35 | 1-7/8 | 48 | 2-5/16 | 59 | 1/4 | 3/8 |
| BVS-320 | 6-3/4 | 171 | 4 | 102 | 4-7/8 | 124 | 5 | 127 | 1/2 | 13 | 1-1/8 | 29 | 1-5/8 | 41 | 2-1/4 | 57 | 2-3/4 | 70 | 3/8 | 1/2 |
| BVS-380 | 7-15/16 | 202 | 4-3/4 | 121 | 5-13/16 | 148 | 6 | 152 | 5/8 | 16 | 1-1/8 | 29 | 2 | 51 | 2-11/16 | 68 | 3 | 76 | 3/8 | 1/2 |
| BVS-510 | 8-15/16 | 227 | 4-3/4 | 121 | 5-3/4 | 146 | 7 | 178 | 5/8 | 16 | 1-1/4 | 32 | 2-1/4 | 57 | 2-9/16 | 65 | 3-7/16 | 87 | 1/2 | 3/4 |
| BVS-570 | 10-3/16 | 259 | 5-7/16 | 138 | 7-1/4 | 184 | 8 | 203 | 3/4 | 19 | 1 | 25 | 2-15/16 | 75 | 3-5/16 | 84 | 4-3/16 | 106 | 3/4 | 1 |
| BVST-4400 | 10-3/16 | 259 | 5-7/16 | 138 | 7-1/4 | 184 | 8 | 203 | 3/4 | 19 | 1 | 25 | 2-15/16 | 75 | 3-5/16 | 84 | 4-3/16 | 106 | 3/4 | 1 |

* Max. mounting bolt diameter
 ** Alternate bolt patterns available. Consult factory.

NOTE: • Material, Dimensions & Data subject to change without notice
 • Dimensions ±1/16"
 • Engineered dimensional drawings available on request

HEAVY DUTY TURBINE "SILENT" PNEUMATIC VIBRATORS



- Popular, Economical, Heavy Duty
- Large Bearings for Long Service Life
- Quiet Operation with Built-In Muffler
- Adjustable Speed
- Ideal for Dusty, Rough Environments
- No Lubrication Required

SERIES VS - Introducing VIBCO's VS Series Turbine Vibrator - the ultimate solution for material conveying systems. Specifically designed for medium-sized batch hoppers and screeds, this versatile model excels in continuous duty applications. With its robust cast housing, the VS Turbine Vibrator can withstand rough conditions like concrete form vibration. Choose from eight different sizes and experience up to 900 pounds of force, ensuring the perfect fit for your material handling needs.

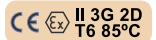
The VS Model also offers various finishes and paint, making it suitable for food-grade and sanitary environments. Its powerful performance keeps bulk material flowing effortlessly, eliminating the need for lubrication and ensuring a hassle-free operation. Experience the power, durability, and versatility of VIBCO's VS Series Turbine Vibrator to optimize your material handling processes.



Material conveying systems work more efficiently with our Model VS Turbine mounted to structural members. Use one of VIBCO's complete mounting systems to get full efficiency and longer life from your vibrator.



Technical Data



| Model | Weight*** | | 60 PSI (4 Bar) | | | | 80 PSI (5.5 Bar) | | | | Sound* | Max. Weight** of Material in Bin Slope Area | |
|-----------------|-----------|---------|--------------------|--------------------|-------------------|--------------------|--------------------|-------------------|------|-------|--------|---|-------|
| | lbs. | kg. | Vibration per min. | Cubic ft. per min. | Centrifugal Force | Vibration per min. | Cubic ft. per min. | Centrifugal Force | lbs. | kg. | | | |
| VS-100 | 0.4 | 0.2 | 12,000 | 2.5 | 20 | 90 | — | — | — | — | 66 | 200 | 90 |
| VS-130 | 0.6 | 0.3 | 9,000 | 2.5 | 45 | 195 | 10,500 | 5.5 | 75 | 335 | 67 | 750 | 340 |
| VS-160/VS-160AL | 2.8/1.7 | 1.3/0.8 | 10,500 | 4.0 | 110 | 495 | 12,000 | 7.0 | 160 | 710 | 70 | 1,600 | 725 |
| VS-190 | 3.1 | 1.4 | 6,500 | 6.0 | 90 | 410 | 12,000 | 7.5 | 270 | 1,200 | 70 | 2,700 | 1,225 |
| VS-250/VS-250AL | 4.5/3.2 | 2.1/1.5 | 7,000 | 6.0 | 290 | 1,300 | 12,000 | 7.5 | 500 | 2,245 | 70 | 5,000 | 2,270 |
| VS-320 | 6.5 | 2.9 | 5,000 | 12.0 | 350 | 1,560 | 6,000 | 15.5 | 600 | 2,670 | 69 | 6,000 | 2,720 |
| VS-380/VS-380AL | 11.0/7.0 | 5.2/3.2 | 4,200 | 13.0 | 570 | 2,520 | 5,600 | 16.5 | 725 | 3,225 | 72 | 7,250 | 3,290 |
| VS-510/VS-510AL | 15.0/9.4 | 6.8/4.3 | 6,000 | 16.0 | 710 | 3,165 | 6,600 | 20.5 | 900 | 4,005 | 77 | 9,000 | 4,080 |

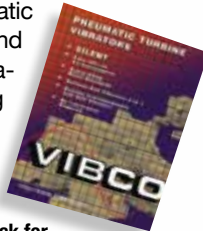
* Decibel from A-scale at 1 meter and 80 PSI (or maximum listed value)
 ** Rule of thumb for sizing: One lb. vibrator force to each 10 lbs. of bin content at 80 PSI (or maximum listed value)
 *** First weight is cast iron housing/second weight is Aluminum (AL) signifies aluminum housing

NOTE: • Data obtained on laboratory test block
 • Frequency and force will decrease on less rigid mount
 • Data subject to design changes

VIBCO VS SERIES BUILT-IN MUFFLER



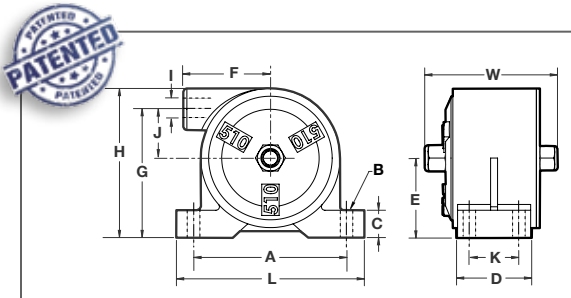
VIBCO patented the first pneumatic turbine vibrator in the early '70s and has excelled at developing vibrators for industry, manufacturing and construction use ever since. Our current patented design is *enclosed, maintenance-free, and features quiet operation.*



Ask for Catalog #9127



VIBCO's Model VS Turbine Vibrator works equally well on hopper applications or in conveying delicate glass vaccine bottles as the VS-100 silent Turbine is doing (above) without breakage or getting stuck.



Dimensions

| Model | L | | W | | H | | A** | | B* | | C | | D | | E | | F | | G | | I NPT | J | | K | |
|--------|---------|-----|-------|-----|---------|-----|-------|-----|-----|----|-------|----|--------|----|-------|----|--------|----|---------|-----|-------|-------|----|-------|----|
| | in. | mm | in. | mm | in. | mm | in. | mm | in. | mm | in. | mm | in. | mm | in. | mm | in. | mm | in. | mm | | in. | mm | in. | mm |
| VS-100 | 3-7/8 | 98 | 1-7/8 | 48 | 2 | 51 | 3 | 76 | 1/4 | 6 | 3/8 | 10 | 3/4 | 19 | 1 | 25 | 1-5/16 | 33 | 1-11/16 | 43 | 1/8 | 5/8 | 16 | - | - |
| VS-130 | 4-7/8 | 124 | 2 | 51 | 2-5/16 | 59 | 4 | 102 | 3/8 | 10 | 3/8 | 10 | 15/16 | 24 | 1-1/4 | 32 | 1-1/2 | 38 | 1-15/16 | 49 | 1/8 | 3/4 | 19 | - | - |
| VS-160 | 5-1/8 | 130 | 2-7/8 | 73 | 3 | 76 | 4 | 102 | 3/8 | 10 | 5/8 | 16 | 1-3/8 | 35 | 1-5/8 | 41 | 1-7/8 | 48 | 2-7/16 | 62 | 1/4 | 7/8 | 22 | - | - |
| VS-190 | 5-7/16 | 138 | 3-1/4 | 83 | 3-1/16 | 78 | 4 | 102 | 3/8 | 10 | 5/8 | 16 | 1-5/16 | 33 | 1-3/4 | 44 | 2-1/8 | 54 | 2-1/2 | 64 | 1/4 | 7/8 | 22 | - | - |
| VS-250 | 5-1/2 | 140 | 3-5/8 | 92 | 3-11/16 | 94 | 4 | 102 | 1/2 | 13 | 9/16 | 14 | 1-1/2 | 38 | 1-7/8 | 48 | 2-1/4 | 57 | 3 | 76 | 1/4 | 1-1/8 | 29 | - | - |
| VS-320 | 5-1/2 | 140 | 4 | 102 | 4-3/4 | 121 | 4 | 102 | 1/2 | 13 | 13/16 | 21 | 1-3/4 | 44 | 2-3/4 | 70 | 2-1/4 | 57 | 4-1/8 | 105 | 3/8 | 1-1/4 | 32 | - | - |
| VS-380 | 6-7/8 | 175 | 4-3/4 | 121 | 4-7/8 | 124 | 5-1/2 | 140 | 3/8 | 10 | 1 | 25 | 2-1/4 | 57 | 2-1/2 | 64 | 2-7/8 | 73 | 4 | 102 | 3/8 | 1-1/2 | 38 | 1-1/4 | 32 |
| VS-510 | 6-15/16 | 176 | 4-3/4 | 121 | 5-3/8 | 137 | 5-1/2 | 140 | 3/8 | 10 | 1 | 25 | 2-3/4 | 70 | 2-7/8 | 73 | 3-1/4 | 83 | 4-3/4 | 121 | 1/2 | 1-3/4 | 44 | 1-3/4 | 44 |

* Max. mounting bolt diameter
 ** Alternate bolt patterns available. Consult factory.

NOTE: • Material, Dimensions & Data subject to change without notice
 • Dimensions ±1/16"
 • Engineered dimensional drawings available on request

HEAVY DUTY TURBINE "SILENT" PNEUMATIC VIBRATORS



- Years of Trouble-Free Service
- High Force
- Quiet, Exceeds OSHA Standards
- Patented Design
- No Lubrication Required

Introducing our revolutionary line of pneumatic vibrators, the most quiet and most efficient units on the market. With their high force output and virtually silent operation, these vibrators are designed to provide optimal performance without compromising on peace and quiet. Featuring nine models, all utilizing our patented turbine principle, these vibrators are powered by compressed air that drives a specially designed turbine wheel. This allows the air to be channeled through the unit, then exhausts through muffler pads, resulting in an almost noiseless operation. Say goodbye to the disruptive noise associated with traditional vibrators. Our units are pre-lubricated for life, eliminating the need for additional lubrication. Equipped with oversized bearings, they are built to provide years of trouble-free service, ensuring durability and reliability.

MODEL CCF-2000, CCF-5000 & 7000 - Foot Mount: Ideal for large bins, hoppers, chutes, packing tables, and screen applications. The lightweight CCF-2000 and CCF-5000 models replace noisy 3" and 4" piston vibrators, offering high force output. The CCF-7000 featuring low noise levels is specifically designed for precast and concrete applications, providing a quiet alternative to roller vibrators.

MODEL CCW-2000 - Wedge Mount: This portable solution comes with a 2" or 3" wide wedge. The 2" wedge is perfect for septic tanks, manholes, columns, portable hoppers, and tote bins, while the 3" wedge is suitable for larger forms such as wall and utility vaults.

MODEL CCW-2500 HOBOTM - Wedge Mount: The Hobo Heavy Duty Pneumatic Turbine Vibrator is the lightest weight railroad car shaker available, weighing only 24 lbs! It offers high force output and virtually silent operation, making it an excellent choice for rail car clean-outs (see page 59).

MODEL CCW-5000 - Wedge Mount: The Quiet Railroad Car-shaker that has replaced noisy piston railroad car shakers. Designed to fit all standard wedge brackets on hopper railroad cars, it replaces 3" and 4" piston vibrators.

MODEL CCL-2000, 5000, 7000 - Lug Mount: The lightweight CCL-2000 is perfect for small concrete precast forms, while the CCL models are suitable for tables, casting concrete panels, window frames, and more. The CCL-7000 offers high force and replaces noisy roller vibrators in the concrete pipe, prestressed, and precast industries.

MODEL VSP-510 - Pin Bracket Mount: The VSP-510 is a silent unit designed for concrete burial vaults and other applications where the vibrator needs to be moved from form to form or bin to bin. These units meet OSHA standards for quiet operation and outlast standard pistons three to one.

Ask for
Catalogs:
Railroad
Car
Shaker,
Concrete Handbook
and Concrete Walls & Columns



Technical Data



| Model | Weight | | 60 PSI (4 Bar) | | | | 80 PSI (5.5 Bar) | | | | Sound* | Max. Weight** of Material in Bin Slope Area | |
|----------------------------|---------|----------|--------------------|--------------------|-------------------|---------|--------------------|--------------------|-------------------|---------|--------|---|--------|
| | | | Vibration per min. | Cubic ft. per min. | Centrifugal Force | | Vibration per min. | Cubic ft. per min. | Centrifugal Force | | | | |
| | lbs.*** | kg. | VPM | CFM air | lbs. | Newtons | VPM | CFM air | lbs. | Newtons | dB | lbs. | kg. |
| CCF-2000/CCF-2000AL | 23/15 | 10.5/6.8 | 4,000 | 30 | 890 | 3,960 | 6,000 | 40 | 2,000 | 8,895 | 78 | 20,000 | 9,070 |
| CCL-2000 | 23 | 10.5 | 4,000 | 30 | 890 | 3,960 | 6,000 | 40 | 2,000 | 8,895 | 78 | 20,000 | 9,070 |
| CCW-2000 | 23 | 10.5 | 4,000 | 30 | 890 | 3,960 | 6,000 | 40 | 2,000 | 8,895 | 78 | 20,000 | 9,070 |
| CCW-2500 | 22 | 10.0 | 4,000 | 25 | 1,115 | 4,960 | 6,000 | 35 | 2,500 | 11,120 | 78 | 25,000 | 11,340 |
| CCF & CCL-5000 | 48 | 21.8 | 4,000 | 35 | 2,220 | 9,875 | 6,000 | 50 | 5,000 | 22,240 | 75 | 50,000 | 22,680 |
| CCW-5000 | 48 | 21.8 | 4,000 | 35 | 2,220 | 9,875 | 6,000 | 50 | 5,000 | 22,240 | 75 | 50,000 | 22,680 |
| CCF & CCL-7000 | 48 | 21.8 | 5,000 | 40 | 3,380 | 15,035 | 7,200 | 50 | 7,000 | 31,135 | 78 | 70,000 | 31,750 |
| VSP-510 | 15 | 6.8 | 4,000 | 18 | 790 | 3,515 | 4,500 | 21 | 1,000 | 4,450 | 77 | 10,000 | 4,500 |

* Decibel from A-scale at 1 meter and 80 PSI

** Rule of thumb for sizing: One lb. vibrator force to each 10 lbs. of bin content at 80 PSI

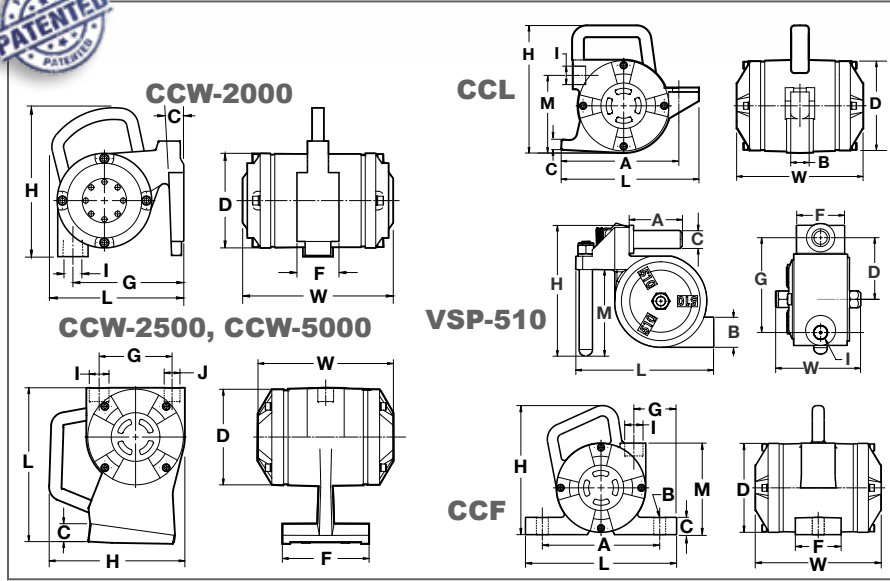
*** First weight is cast iron housing/second weight is Aluminum housing (AL) signifies aluminum housing

NOTE: • Data obtained on laboratory test block

• Frequency and force will decrease on less rigid mount

• Data subject to design changes

CC SERIES HIGH FORCE



The CCW-2500 HOBO™ unit shown here fits the standard rail car female wedge bracket for easy unloading of a rail road hopper car.

Dimensions

| Model | L | | W | | H | | A** | | B* | | C | | D | | F | | G | | I | J | M | |
|------------------|--------|-----|---------|-----|-------|-----|-----|-----|--------|----|-------|----|--------|-----|-------|-----|---------|-----|-----|-----|-------|-----|
| | in. | mm | in. | mm | in. | mm | in. | mm | in. | mm | in. | mm | in. | mm | in. | mm | in. | mm | NPT | NPT | in. | mm |
| CCF-2000 | 7-1/2 | 190 | 8-1/16 | 205 | 7-1/8 | 181 | 6 | 152 | 5/8 | 16 | 3/4 | 19 | 5-1/8 | 130 | 2 | 51 | 1-3/4 | 44 | 3/4 | - | 5-3/8 | 137 |
| CCL-2000 | 7 | 178 | 8-1/16 | 205 | 7-1/4 | 184 | 6 | 152 | 3/4 | 19 | 3/8 | 10 | 5-1/8 | 130 | - | - | - | - | 3/4 | - | 4-1/8 | 105 |
| CCW-2000 | 7 | 178 | 8-1/16 | 205 | 8 | 203 | - | - | - | - | 7/8 | 22 | 5-1/8 | 130 | 2-1/4 | 57 | 5-15/16 | 151 | 3/4 | - | - | - |
| CCW-2500 | 9-3/4 | 248 | 6-7/16 | 164 | 8-5/8 | 219 | - | - | - | - | 1-1/8 | 29 | 6-1/16 | 154 | 5-1/2 | 140 | 4-11/16 | 120 | 3/4 | 3/4 | - | - |
| CCF- 5000 & 7000 | 10-1/4 | 260 | 8-5/8 | 219 | 8-7/8 | 225 | 8 | 203 | 3/4 | 19 | 1-1/8 | 29 | 6-1/16 | 154 | 3-1/8 | 79 | 2-7/8 | 73 | 1 | - | 6-1/4 | 159 |
| CCL- 5000 & 7000 | 9-3/8 | 238 | 8-5/8 | 219 | 8-5/8 | 219 | 8 | 203 | 1 | 25 | 13/16 | 21 | 6-1/16 | 154 | - | - | - | - | 1 | - | 5-1/4 | 133 |
| CCW-5000 | 9-3/4 | 248 | 8-5/8 | 219 | 8-5/8 | 219 | - | - | - | - | 1-1/8 | 29 | 6-1/16 | 154 | 5-1/2 | 140 | 4-5/8 | 117 | 1 | 3/4 | - | - |
| VSP-510 | 8 | 203 | 4-13/16 | 121 | 7-1/8 | 181 | 3 | 76 | 1-1/2† | 38 | 1 | 25 | 3-1/2 | 89 | 2-5/8 | 67 | 5-5/16 | 135 | 1/2 | - | 4-3/4 | 121 |

* Max. mounting bolt diameter
 ** Alternate bolt patterns available. Consult factory.
 † See drawing for dimension B, no bolt required for VSP-510

NOTE: • Material, Dimensions & Data subject to change without notice
 • Dimensions ±1/16"
 • Engineered dimensional drawings available on request

"SILENT" PNEUMATIC TURBINE VIBRATORS

MLT-380
MHI-380
eco FRIENDLY

MLT-320
MHI-320
eco FRIENDLY

MLT-250
MHI-250
eco FRIENDLY



- **MLT Continuous Duty**
- **MHI High Speed, Fast Start, Intermittent Duty**
- **Lightweight Extruded Al Housing**
- **Pressure Range 30 to 80 PSI**
- **Quiet, Exceeds OSHA Standards**
- **No Lubrication Req'd**
- **High Temp (HT) avail. Consult Factory**

SERIES MLT - Experience lightweight power with VIBCO's MLT line vibrators. Crafted with extruded aluminum housings, stainless steel shafts, and aircraft aluminum end covers, these vibrators are built for strength, durability, and a long life. The oversized bearings provide additional robustness, ensuring reliable performance. With a slotted mounting hole design, installation becomes a breeze on various bolt patterns. The tapped exhaust ports enable easy piping of exhausting air to maintain a clean environment, or you can opt to install a muffler to reduce noise. Operating within a range of 30-80 PSI and a maximum temperature of 200°F or 93°C 9SLX, these units offer versatility for different applications. Plus, they operate virtually noiselessly, with a dB reading as low as 68 dB on the A-scale at 1 meter, well below OSHA limits.

SERIES MHI - Discover the power of quick-start and high frequency with VIBCO's MHI line. These vibrators boast a fast start, reaching full RPM in half the time of standard models. Additionally, they provide a high frequency for efficient performance. The MHI line is designed to meet the demands of various industries, offering a reliable solution for your needs.

Sanitary Finishes - Standard finish is unpainted aluminum. Both the MLT and MHI lines are available in a range of sanitary finishes tailored to the food and beverage as well as pharmaceutical industries. Choose standard or high gloss dairy white industrial enamel, ensuring the right fit for your specific application.



Ask for Catalog #9127



Technical Data

CE II 3G 2D T6 85°C

| Model | Weight | | 60 PSI (4 Bar) | | | | 80 PSI (5.5 Bar) | | | | Sound* | Max. Weight** of Material in Bin Slope Area | |
|---------|--------|-----|--------------------|--------------------|-------------------|---------|--------------------|--------------------|-------------------|---------|--------|---|-------|
| | | | Vibration per min. | Cubic ft. per min. | Centrifugal Force | | Vibration per min. | Cubic ft. per min. | Centrifugal Force | | | | |
| | lbs. | kg. | | | VPM | CFM air | | | lbs. | Newtons | VPM | CFM air | lbs. |
| MLT-100 | 0.4 | 0.2 | 10,000 | 2.5 | 20 | 90 | — | — | — | — | 66 | 200 | 90 |
| MLT-130 | 1.0 | 0.5 | 7,500 | 4.5 | 50 | 225 | 10,500 | 5.5 | 75 | 335 | 68 | 750 | 340 |
| MLT-190 | 2.0 | 0.9 | 7,000 | 7.5 | 160 | 710 | 12,000 | 7.5 | 270 | 1,200 | 68 | 2,700 | 1,225 |
| MLT-250 | 2.4 | 1.1 | 7,000 | 8.0 | 250 | 1,115 | 12,000 | 9.0 | 480 | 2,135 | 72 | 4,800 | 2,180 |
| MLT-320 | 4.5 | 2.0 | 5,500 | 9.0 | 390 | 1,735 | 6,800 | 15.5 | 600 | 2,669 | 70 | 6,000 | 2,700 |
| MLT-380 | 13.1 | 6.0 | 4,200 | 13.0 | 545 | 2,415 | 5,600 | 16.5 | 670 | 2,980 | 74 | 6,700 | 3,040 |
| MHI-100 | 0.4 | 0.2 | 24,000 | 2.5 | 80 | 355 | — | — | — | — | 68 | 200 | 90 |
| MHI-130 | 1.0 | 0.5 | 17,200 | 4.5 | 200 | 890 | 21,000 | 5.5 | 300 | 1,340 | 68 | 3,000 | 1,350 |
| MHI-190 | 2.0 | 0.9 | 15,000 | 7.5 | 335 | 1,490 | 17,500 | 8.5 | 575 | 2,560 | 71 | 5,750 | 2,590 |
| MHI-250 | 2.4 | 1.1 | 11,000 | 8.0 | 510 | 2,270 | 13,100 | 9.0 | 965 | 9,290 | 72 | 9,650 | 4,350 |
| MHI-320 | 4.5 | 2.0 | 8,700 | 9.0 | 675 | 3,000 | 11,000 | 10.0 | 1300 | 5,780 | 70 | 13,000 | 5,855 |
| MHI-380 | 9.0 | 4.0 | 7,000 | 13.0 | 350 | 1,560 | 10,000 | 17.0 | 1680 | 7,470 | 74 | 6,800 | 3,090 |

* Decibel from A-scale at 1 meter and 80 PSI (or maximum listed value)
 ** Rule of thumb for sizing: One lb. vibrator force to each 10 lbs. of bin content at 80 PSI (or maximum listed value)

NOTE: • Data obtained on laboratory test block
 • Frequency and force will decrease on less rigid mount
 • Data subject to design changes

VIBCO MLT SERIES LIGHTWEIGHT

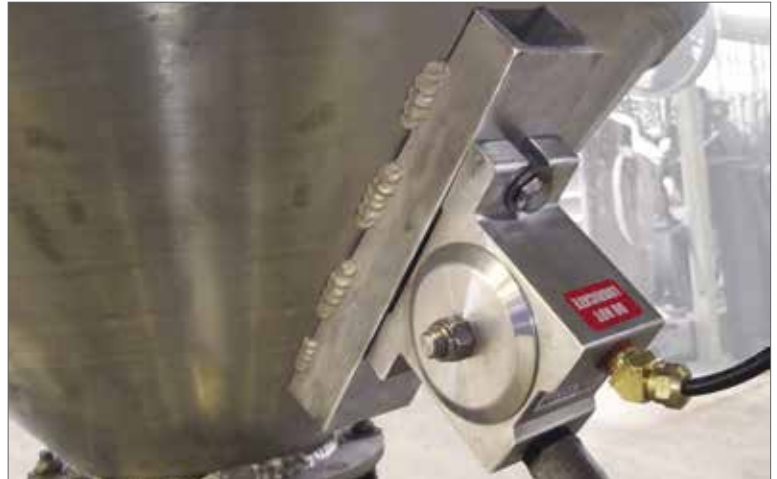
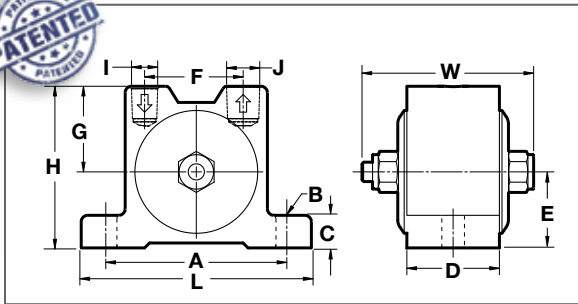
MLT190
MHI-190
ECO FRIENDLY



MLT-130
MHI-130
ECO FRIENDLY



MLT-100
MHI-100
ECO FRIENDLY



"Efficiency and Maintenance-Free Operation: The MLT Vibrators (MLT-190 shown on the right) feature high speed sealed bearings and pre-lubrication for life, eliminating the need for maintenance. VIBCO's mounting system enhances efficiency and prolongs vibrator life. Contact our factory for additional mounting details."

Dimensions

| Model | L | | W | | H | | A** | | B* | | C | | D | | F | | G | | I | | J | |
|---------|---------|-----|---------|-----|--------|-----|--------|-----|-----|----|--------|----|---------|----|---------|----|---------|----|-----|-----|-----|-----|
| | in. | mm | in. | mm | in. | mm | in. | mm | in. | mm | in. | mm | in. | mm | in. | mm | in. | mm | NPT | NPT | NPT | NPT |
| MLT-100 | 2-13/16 | 71 | 1-5/8 | 41 | 2 | 51 | 2-3/16 | 56 | 1/4 | 6 | 3/8 | 10 | 13/16 | 21 | 1-1/8 | 29 | 1-1/16 | 27 | 1/8 | 1/8 | | |
| MLT-130 | 3-1/2 | 89 | 1-7/8 | 48 | 2-1/2 | 64 | 2-3/4 | 70 | 1/4 | 6 | 1/2 | 13 | 1 | 25 | 1-7/16 | 37 | 1-1/8 | 29 | 1/8 | 1/4 | | |
| MLT-190 | 4-1/2 | 114 | 3-3/8 | 86 | 3-1/8 | 79 | 3-1/2 | 89 | 3/8 | 10 | 5/8 | 16 | 1-13/16 | 46 | 1-15/16 | 49 | 1-1/2 | 38 | 1/4 | 3/8 | | |
| MLT-250 | 5 | 127 | 3-1/2 | 89 | 3-3/8 | 86 | 4 | 102 | 3/8 | 10 | 5/8 | 16 | 2 | 51 | 2-1/4 | 57 | 1-11/16 | 43 | 1/4 | 3/8 | | |
| MLT-320 | 6-5/16 | 160 | 4 | 102 | 4-3/16 | 106 | 5 | 127 | 1/2 | 13 | 13/16 | 21 | 2 | 51 | 2-3/4 | 70 | 2-3/16 | 56 | 3/8 | 1/2 | | |
| MLT-380 | 7-5/8 | 194 | 4-15/16 | 125 | 4-3/4 | 121 | 6 | 152 | 5/8 | 16 | 1-3/16 | 30 | 2-5/16 | 59 | 3-1/8 | 79 | 2-3/8 | 60 | 3/8 | 1/2 | | |
| MHI-100 | 2-13/16 | 71 | 1-5/8 | 41 | 2 | 51 | 2-3/8 | 60 | 1/4 | 6 | 3/8 | 10 | 13/16 | 21 | 1-1/8 | 29 | 1-1/16 | 27 | 1/8 | 1/8 | | |
| MHI-130 | 3-1/2 | 89 | 1-7/8 | 48 | 2-1/2 | 64 | 2-3/4 | 70 | 1/4 | 6 | 1/2 | 13 | 1 | 25 | 1-7/16 | 37 | 1-3/16 | 29 | 1/8 | 1/4 | | |
| MHI-190 | 4-1/2 | 114 | 3-3/8 | 86 | 3-1/8 | 79 | 3-1/2 | 89 | 3/8 | 10 | 5/8 | 16 | 1-13/16 | 46 | 1-15/16 | 49 | 1-3/4 | 44 | 1/4 | 3/8 | | |
| MHI-250 | 5 | 127 | 3-1/2 | 89 | 3-3/8 | 86 | 4 | 102 | 3/8 | 10 | 5/8 | 16 | 2 | 51 | 2-1/4 | 57 | 1-11/16 | 43 | 1/4 | 3/8 | | |
| MHI-320 | 6-5/16 | 160 | 4 | 102 | 4-3/16 | 106 | 5 | 127 | 1/2 | 13 | 13/16 | 21 | 2 | 51 | 2-3/4 | 70 | 2-3/16 | 56 | 3/8 | 1/2 | | |
| MHI-380 | 7-5/8 | 194 | 4-15/16 | 125 | 4-3/4 | 121 | 6 | 152 | 5/8 | 16 | 1-3/16 | 30 | 2-5/16 | 59 | 3-1/8 | 79 | 2-3/8 | 60 | 3/8 | 1/2 | | |

* Max. mounting bolt diameter
** Alternate bolt patterns available. Consult factory.

NOTE: • Material, Dimensions & Data subject to change without notice
• Dimensions ±1/16"
• Engineered dimensional drawings available on request

"SILENT" PNEUMATIC TURBINE VIBRATORS



- **Lightweight Aluminum Housing**
- **Sanitary, Washdown Safe**
- **Quiet, Exceeds OSHA Standards**
- **From 100 to 600 lbs of Force**
- **No Lubrication Required**
- **Slotted Foot for Flexible Placement**
- **Thin and Smooth to Fit in Tight Spaces**
- **Fit's Competitive Hole Patterns**

SERIES STV -VIBCO proudly presents the SERIES STV, a breakthrough solution for the safe wash-down requirements of pharmaceutical, chemical, and laboratory environments. Developed by our skilled engineers, this line of enclosed units guarantees exceptional performance and unmatched durability.

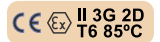
Designed with meticulous attention to detail, the STV units eliminate any concerns of material collection with their protrusion-free construction. The completely enclosed design ensures maximum safety. The STV units are wash safe, (enclosed for washing but not sealed for rigorous power washing) allowing for efficient and thorough cleaning without compromising their functionality. By simply attaching an air hose to the exhaust port, you can easily channel the exhausting air away from the area, promoting a clean and comfortable environment.

At VIBCO, we take pride in our patented design, which guarantees a long and maintenance-free service life for the STV units. Crafted from high-quality, all aluminum material, these units are impervious to rust and corrosion, providing exceptional reliability and longevity.

Whether you require vibration force for small bins and chutes or large-scale applications in the food, beverage, pharmaceutical, or chemical industries, the STV line offers versatile solutions. With any of the above vibrators, you can achieve optimal vibration performance for a wide range of applications, ensuring efficient and safe operations.



Ask for Catalog #9127



Technical Data

| Model | Weight | | 60 PSI (4 Bar) | | | | 80 PSI (5.5 Bar) | | | | Sound* | Max. Weight** of Material in Bin Slope Area | |
|---------|--------|-----|--------------------|--------------------|-------------------|---------|--------------------|--------------------|-------------------|---------|--------|---|-------|
| | | | Vibration per min. | Cubic ft. per min. | Centrifugal Force | | Vibration per min. | Cubic ft. per min. | Centrifugal Force | | | | |
| | lbs. | kg. | VPM | CFM air | lbs. | Newtons | VPM | CFM air | lbs. | Newtons | | | |
| STV-100 | 0.4 | 0.2 | 24,000 | 2.5 | 80 | 355 | — | — | — | — | 68 | 200 | 90 |
| STV-130 | 1.0 | 0.5 | 17,200 | 4.5 | 200 | 890 | 21,000 | 5.5 | 300 | 1,340 | 68 | 3,000 | 1,350 |
| STV-190 | 2.0 | 0.9 | 8,000 | 7.5 | 335 | 1,490 | 10,500 | 8.5 | 575 | 2,560 | 71 | 5,750 | 2,590 |
| STV-250 | 2.4 | 1.1 | 7,400 | 8.0 | 510 | 2,270 | 10,200 | 9.0 | 965 | 9,290 | 72 | 9,650 | 4,350 |
| STV-320 | 4.5 | 2.0 | 7,200 | 9.0 | 675 | 3,000 | 10,000 | 10.0 | 1300 | 5,780 | 70 | 13,000 | 5,855 |
| STV-380 | 13.1 | 6.0 | 7,000 | 13.0 | 350 | 1,560 | 10,000 | 17.0 | 680 | 3,025 | 74 | 6,800 | 3,090 |

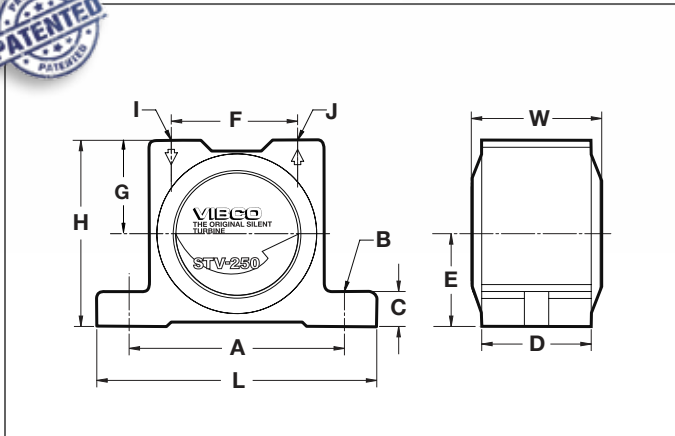
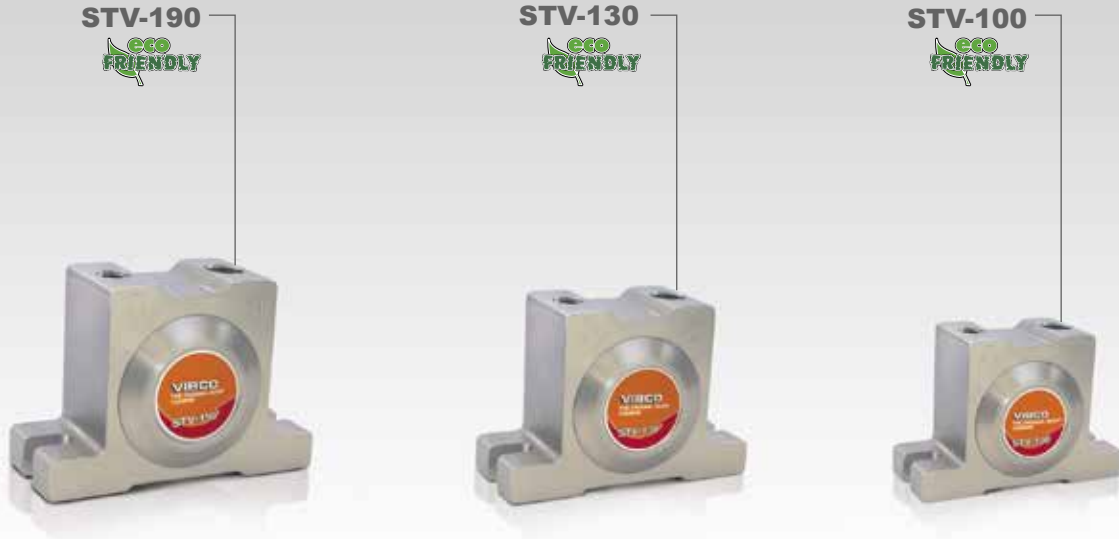
* Decibel from A-scale at 1 meter and 80 PSI (or maximum listed value)

** Rule of thumb for sizing: One lb. vibrator force to each 10 lbs. of bin content at 80 PSI (or maximum listed value)

NOTE: • Data obtained on laboratory test block
• Frequency and force will decrease on less rigid mount
• Data subject to design changes

VIBCO STV SERIES

SANITARY & WASHDOWN SAFE



Totally enclosed, the STV shown right is unaffected by washing and will not rust or corrode.

Dimensions

| Model | L | | W | | H | | A** | | B* | | C | | D | | F | | G | | I | J |
|---------|---------|-----|---------|----|--------|-----|--------|-----|-----|----|--------|----|---------|----|---------|----|---------|----|-----|-----|
| | in. | mm | in. | mm | in. | mm | in. | mm | in. | mm | in. | mm | in. | mm | in. | mm | in. | mm | NPT | NPT |
| STV-100 | 2-13/16 | 71 | 1-3/16 | 30 | 2 | 51 | 2-3/16 | 56 | 1/4 | 6 | 3/8 | 10 | 13/16 | 21 | 1-1/8 | 29 | 1-1/16 | 27 | 1/8 | 1/8 |
| STV-130 | 3-1/2 | 89 | 1-7/16 | 37 | 2-1/2 | 64 | 2-3/4 | 70 | 1/4 | 6 | 1/2 | 13 | 1 | 25 | 1-7/16 | 37 | 1-1/8 | 29 | 1/8 | 1/4 |
| STV-190 | 4-1/2 | 114 | 2-3/16 | 56 | 3-1/8 | 79 | 3-1/2 | 89 | 3/8 | 10 | 5/8 | 16 | 1-13/16 | 46 | 1-15/16 | 49 | 1-11/16 | 43 | 1/4 | 3/8 |
| STV-250 | 5 | 127 | 2-3/8 | 60 | 3-3/8 | 86 | 4 | 102 | 3/8 | 10 | 5/8 | 16 | 2 | 51 | 2-1/4 | 57 | 1-11/16 | 43 | 1/4 | 3/8 |
| STV-320 | 6-5/16 | 160 | 2-11/16 | 68 | 4-3/16 | 106 | 5 | 127 | 1/2 | 13 | 13/16 | 21 | 2 | 51 | 2-3/4 | 70 | 2-3/16 | 56 | 3/8 | 1/2 |
| STV-380 | 7-5/8 | 194 | 3-1/8 | 79 | 4-3/4 | 121 | 6 | 152 | 5/8 | 16 | 1-3/16 | 30 | 2-5/16 | 59 | 3-1/8 | 79 | 2-3/8 | 60 | 3/8 | 1/2 |

* Max. mounting bolt diameter
 ** Alternate bolt patterns available.
 Consult factory.

NOTE: • Material, Dimensions & Data subject to change without notice
 • Dimensions $\pm 1/16"$
 • Engineered dimensional drawings available on request

VIBCO MLTSS, MHISS STAINLESS PNEUMATIC, CONTINUOUS/INTERMITTENT DUTY

MLTSS-320
MHISS-320



MLTSS-190
MHISS-190



MLTSS-130
MHISS-130

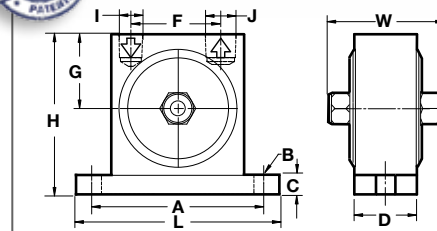


- **MLTSS SERIES** are Continuous Duty
- **MHISS SERIES** are High Speed, Fast Start, Intermittent Duty
- **MLTSS & MHISS Series Can Be Made from 2 Grades of Stainless Steel - Standard 303 or Optional 316L**
- **Ideal for Sanitary Applications Even in Harsh Chemical Environments.**
- **Optional extreme temperature version -40 to 350 F° avail.**
- **Quiet, Meets OSHA Standards**
- **No Lubrication Required**

Enhanced Strength and Easy Installation: These vibrators feature oversized bearings for added strength, durability, and extended lifespan. Their slotted mounting holes allow for easy installation on various bolt patterns. The tapped exhaust ports enable the option to pipe off the exhausting air for a clean environment, or to install a muffler for reduced noise.



With high speed sealed bearings that are pre-lubricated for life, the MLT Vibrators (like the MLTSS shown above) are virtually maintenance free.



Dimensions

| Model | L | | W | | H | | A** | | B* | | C | | D | | F | | G | | I | J |
|-----------|-------|-----|-------|-----|--------|-----|-------|-----|-----|----|-------|----|---------|----|---------|----|--------|----|-----|-----|
| | in. | mm | in. | mm | in. | mm | in. | mm | in. | mm | in. | mm | in. | mm | in. | mm | in. | mm | NPT | NPT |
| MLTSS-130 | 3-1/2 | 89 | 1-7/8 | 48 | 2-1/2 | 64 | 2-3/4 | 70 | 1/4 | 6 | 1/2 | 13 | 1 | 25 | 1-7/16 | 37 | 1-1/8 | 29 | 1/8 | 1/4 |
| MLTSS-190 | 4-1/2 | 114 | 3-3/8 | 86 | 3-3/16 | 81 | 3-1/2 | 89 | 3/8 | 10 | 5/8 | 16 | 1-13/16 | 46 | 1-15/16 | 49 | 1-1/2 | 38 | 1/4 | 3/8 |
| MLTSS-320 | 6-3/8 | 162 | 4 | 102 | 4-1/4 | 108 | 5 | 127 | 1/2 | 13 | 13/16 | 21 | 2 | 51 | 2-13/16 | 71 | 2-1/16 | 52 | 3/8 | 1/2 |
| MHISS-130 | 3-1/2 | 89 | 1-7/8 | 48 | 2-1/2 | 64 | 2-3/4 | 70 | 1/4 | 6 | 1/2 | 13 | 1 | 25 | 1-7/16 | 37 | 1-3/16 | 29 | 1/8 | 1/4 |
| MHISS-190 | 4-1/2 | 114 | 3-3/8 | 86 | 3-3/16 | 81 | 3-1/2 | 89 | 3/8 | 10 | 5/8 | 16 | 1-13/16 | 46 | 1-15/16 | 49 | 1-3/4 | 44 | 1/4 | 3/8 |
| MHISS-320 | 6 | 152 | 4 | 102 | 4-1/4 | 108 | 5 | 127 | 1/2 | 13 | 13/16 | 21 | 2 | 51 | 2-13/16 | 71 | 2-1/8 | 54 | 3/8 | 1/2 |

* Max. mounting bolt diameter ** Alternate bolt patterns available. Consult factory. NOTE: Material, Dimensions & Data subject to change without notice • Dimensions ±1/16"



Technical Data



| Model | Weight | | 60 PSI (4 Bar) | | | | 80 PSI (5.5 Bar) | | | | Sound* | Max. Weight** of Material in Bin Slope Area | |
|-----------|--------|-----|--------------------|--------------------|-------------------|---------|--------------------|--------------------|-------------------|---------|--------|---|-------|
| | | | Vibration per min. | Cubic ft. per min. | Centrifugal Force | | Vibration per min. | Cubic ft. per min. | Centrifugal Force | | | | |
| | lbs. | kg. | VPM | CFM air | lbs. | Newtons | VPM | CFM air | lbs. | Newtons | dB | lbs. | kg. |
| MLTSS-130 | 2 | 0.9 | 7,500 | 4.5 | 50 | 225 | 10,500 | 5.5 | 75 | 335 | 68 | 750 | 340 |
| MLTSS-190 | 7 | 3.2 | 7,000 | 7.5 | 160 | 710 | 12,000 | 8.5 | 270 | 1,200 | 71 | 2,700 | 1,225 |
| MLTSS-320 | 13 | 6.0 | 5,000 | 9.0 | 510 | 2,270 | 6,000 | 10.0 | 965 | 4,295 | 70 | 9,650 | 4,380 |
| MHISS-130 | 2 | 0.9 | 17,200 | 4.5 | 200 | 890 | 21,000 | 5.5 | 300 | 1,340 | 68 | 3,000 | 1,360 |
| MHISS-190 | 7 | 3.2 | 8,000 | 7.5 | 335 | 1,490 | 10,500 | 8.5 | 575 | 2,560 | 71 | 5,750 | 2,610 |
| MHISS-320 | 13 | 6.0 | 7,200 | 9.0 | 675 | 3,000 | 10,000 | 10.0 | 1,300 | 5,780 | 70 | 13,000 | 5,900 |

* Decibel from A-scale at 1 meter and 80 PSI
** Rule of thumb for sizing: One lb. vibrator force to each 10 lbs. of bin content at 80 PSI

NOTE: • Data obtained on laboratory test block
• Frequency and force will decrease on less rigid mount
• Data subject to design changes

VIBCO PNEUMATIC VIBRATORS ON THE JOB

PNEUMATIC



Powering Industries: VIBCO Pneumatic Turbine Vibrators in Action! Above left: Our Model MLTSS Stainless Steel (pg. 18) ensuring smooth material flow in a manufacturing bin. Above right: Model MLT Vibrator (pg. 14-15) propelling cans effortlessly along the conveyor. Below right: VIBCO piston models (pg. 24-29) providing quick and efficient clearing for trucks, railroad cars, and hoppers (check out our railroad car shakers on pg. 58-59). Left side: Model VS (pg. 10-11) equipped with an internal muffler, tackles dusty and rough environments or maintains a pristine manufacturing setting.

VIBCO's pneumatic turbine vibrators are the trusted choice across diverse industries!



"SILENT" PNEUMATIC TURBINE VIBRATORS



BBS & GIO SERIES

- No Lubrication Required
- Threaded exhaust port
- High Frequency - Fast Start
- Aluminum Housing for BBS Series
- Lightweight Composite, Corrosion Resistant Housing for the GIO Series

MODEL BBS - The BBS series consists of the BBS-100, BBS-130, BBS-160, and BBS-190 models. These vibrators are the smallest in the VIBCO turbine vibrator range, offering versatility and durability. They feature a versatile mount and a sturdy aluminum housing. Additionally, the BBS models can be ordered with a malleable casting for specific requirements. These vibrators are designed for continuous duty operation and do not require oil. Each BBS model comes with a threaded exhaust port, providing ease of installation.

MODEL GIO - The GIO Silent Pneumatic Turbine Vibrators are the smallest VIBCO turbine vibrators available. They are designed for applications that demand exceptional performance in challenging environments such as automotive, appliance, and construction industries. The GIO vibrators are built with an advanced composite glass-infused nylon resin housing, along with a stainless steel shaft and nut. This construction ensures excellent resistance to solvents, chemicals, and high heat. For optimal performance, VIBCO recommends using a factory-recommended filter regulator with the GIO vibrators.

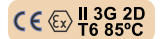


Ask for Cat. #9127

The BBS, shown above, is a remarkably small 3-1/4" x 2" yet packs a punch with 10,000 vibrations per minute and a centrifugal force of 20 lbs. It is ideal for bins which are loaded with up to 200 lbs.



Technical Data



| Model | Weight | | 60 PSI (4 Bar) | | | | 80 PSI (5.5 Bar) | | | | Sound* | Max. Weight** of Material in Bin Slope Area | |
|---------|----------|------|--------------------|--------------------|-------------------|---------|--------------------|--------------------|-------------------|---------|--------|---|-------|
| | | | Vibration per min. | Cubic ft. per min. | Centrifugal Force | | Vibration per min. | Cubic ft. per min. | Centrifugal Force | | | | |
| | lbs. | kg. | VPM | CFM air | lbs. | Newtons | VPM | CFM air | lbs. | Newtons | dB | lbs. | kg. |
| FBS-100 | 9.8 oz. | 0.28 | 17,000 | <2.0 | 30 | 135 | — | — | — | — | 66 | For Match-Plates | |
| FBS-130 | 18.1 oz. | 0.51 | 13,000 | 2.0 | 115 | 505 | 17,000 | 2.25 | 150 | 665 | 68 | For Match-Plates | |
| FBS-160 | 23.9 oz. | 0.68 | 15,000 | 2.25 | 145 | 655 | 18,000 | 2.50 | 225 | 1,000 | 68 | For Match-Plates | |
| FBS-190 | 25.2 oz. | 0.71 | 13,000 | 2.25 | 180 | 805 | 17,000 | 2.50 | 250 | 1,110 | 70 | For Match-Plates | |
| BBS-100 | 5.1 oz. | 0.14 | 10,000 | <2.0 | 20 | 90 | — | — | — | — | 66 | 200 | 90 |
| BBS-130 | 8.1 oz. | 0.23 | 12,000 | 2.0 | 45 | 195 | 17,000 | 2.25 | 75 | 335 | 67 | 750 | 340 |
| BBS-160 | 10.4 oz. | 0.29 | 10,000 | 2.0 | 60 | 265 | 15,000 | 2.25 | 160 | 710 | 67 | 1,600 | 725 |
| BBS-190 | 10.6 oz. | 0.30 | 10,000 | 2.0 | 180 | 805 | 15,000 | 2.25 | 250 | 1,115 | 70 | 2,500 | 1,135 |
| GIO-100 | 4.0 oz. | 0.11 | 8,500 | 5.0 | 250 | 90 | — | — | — | — | 66 | 200 | 90 |
| GIO-160 | 7.2 oz. | 0.20 | 5,500 | 2.0 | 60 | 265 | 9,000 | 2.25 | 160 | 710 | 67 | 1,600 | 725 |
| GIO-190 | 7.2 oz. | 0.20 | 5,000 | 2.0 | 180 | 805 | 8,500 | 2.25 | 250 | 1,115 | 70 | 2,500 | 1,135 |

* Decibel from A-scale at 1 meter and 80 PSI (or maximum listed value)
 ** Rule of thumb for sizing: One lb. vibrator force to each 10 lbs. of bin content at 80 PSI (or maximum listed value)

NOTE: • Data obtained on laboratory test block
 • Frequency and force will decrease on less rigid mount
 • Data subject to design changes

VIBCO FBS, BBS & GIO SERIES

SMALLEST OF VIBCO TURBINES

GIO-100
eco FRIENDLY



FBS-190
FBS-160



FBS-130



FBS-100



FBS SERIES

- **Whisper-Quiet Performance:** Enhanced by a Built-In Muffler
- **Swift Start Innovation:** Empowered by High-Frequency Rapid Start Technology
- **Robust Cast Iron Construction:** Ensuring Prolonged Longevity
- **Hassle-Free Maintenance:** Liberated from the Need for Lubrication

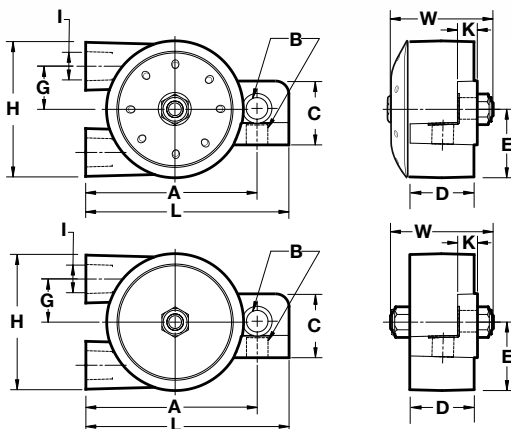


- **Optimal Performance with Extended Lifespan:** Thanks to the Factory-Recommended Filter Regulator

Experience the unparalleled power, whisper-quiet operation, and unwavering reliability of the FBS today. It's the perfect choice for those seeking top notch performance and longevity in their equipment. The FBS-100, 130, 160 and 190, with built in mufflers, are designed as a match plate vibrator for the foundry industry and feature a fast start with high RPM and low noise with a built-in muffler. The match plate vibrators are to be used only for intermittent duty.



FBS



BBS & GIO

Dimensions

| Model | L | | W | | H | | A** | | B* | | C | | D | | E | | G | | I | | K | |
|--|---------|-----|-------|----|--------|----|--------|----|------|----|--------|----|-------|----|-------|----|-------|----|-----|------|----|--|
| | in. | mm | in. | mm | in. | mm | in. | mm | in. | mm | in. | mm | in. | mm | in. | mm | in. | mm | NPT | in. | mm | |
| BBS-100, FBS-100 & GIO-100 | 3-1/4 | 83 | 1-5/8 | 41 | 2 | 51 | 2-5/8 | 67 | 5/16 | 8 | 1 | 25 | 7/8 | 22 | 15/16 | 24 | 9/16 | 14 | 1/8 | 5/16 | 8 | |
| BBS-130, FBS-130 | 3-11/16 | 93 | 1-7/8 | 48 | 2-1/4 | 57 | 3-3/16 | 81 | 3/8 | 10 | 1-3/16 | 30 | 1-1/8 | 27 | 1-1/8 | 29 | 5/8 | 16 | 1/4 | 5/16 | 8 | |
| BBS-160, FBS-160 & GIO-160 BBS-190, FBS-190 & GIO-190 | 4-1/8 | 105 | 2 | 51 | 2-9/16 | 65 | 3-9/16 | 90 | 3/8 | 10 | 1-1/4 | 32 | 1-1/4 | 32 | 1-1/4 | 32 | 15/16 | 24 | 1/4 | 7/16 | 10 | |

* Max. mounting bolt diameter
** Alternate bolt patterns available. Consult factory.

NOTE: • Material, Dimensions & Data subject to change without notice
• Dimensions ±1/16"
• Engineered dimensional drawings available on request

PNEUMATIC BALL VIBRATORS



THE BB SERIES, left, can be equipped with a muffler on the threaded exhaust port. The threaded exhaust allows oily exhaust air to be piped away when absolute cleanliness is required. Designed for applications requiring a small to medium amount of vibration.

VIBCO BALL VIBRATORS

- Tapped Inlet and Outlet
- High Temperature Operation Available, Consult Factory.
- Fast Start
- Bolt Patterns match Competitors

Require lubrication for long maintenance-free operation. Compressed air drives a hardened steel ball at high speeds around a highly finished and hardened steel race creating high frequency vibration. Mount VIBCO Ball Vibrator directly onto mounting plates and channels welded or bolted to the structure to be vibrated.

THE V-LINE BALL VIBRATORS are lowest in cost with tapped exhaust. Versatile, light & sturdy, they're made to work in adverse conditions of rain, heat, cold or dirt, and in any position. The most popular unit is the V-320, considered the work horse of the line, producing 600 lbs. at 10,000 VPM.

THE BV SERIES withstands continuous operation at high temperatures up to 350° by maintaining a constant low air pressure of 5 to 10 PSI through unit when not in operation. For over 350°F, consult factory. Easy to repair. The top air outlet port allows discharged air to be silenced by a muffler, or piped away from the area of operation when absolute cleanliness is required.

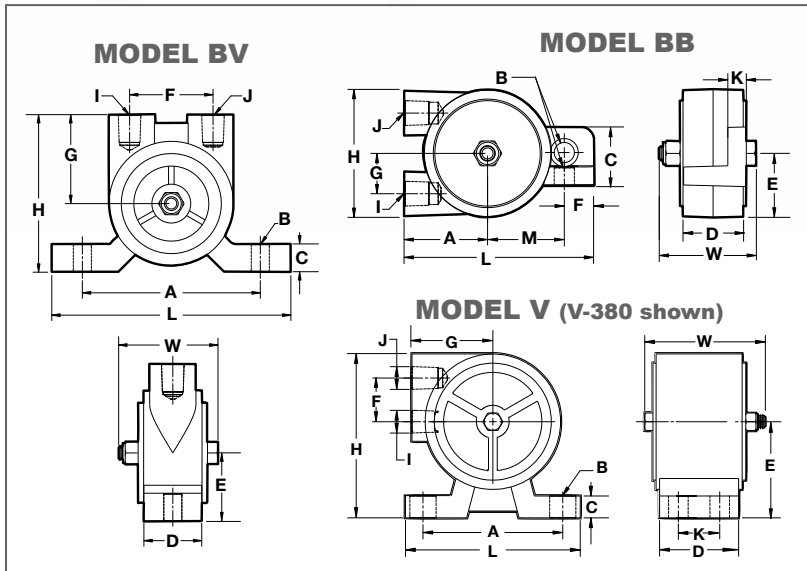
Technical Data

| Model | Weight*** | | Vibration per min. | | Cubic ft. per min. | | Vibration per min. | | Cubic ft. per min. | | Centrifugal Force | | Sound | Max. Weight** of Matl. in Bin Slope Area | |
|------------------|-----------|----------|-------------------------|------|-------------------------|-----|-------------------------|------|--------------------|------------|-------------------|------------|-------------|--|--|
| | lbs. | kg. | VPM* | CFM | VPM* | CFM | VPM* | CFM | lbs. | Newtons | dB* | lbs. | kg. | | |
| SERIES BB | | | 20 PSI (1.4 Bar) | | 40 PSI (2.8 Bar) | | 60 PSI (4 Bar) | | | | | | @VPM | | |
| BB-100 | 8 oz. | 0.23 | 17,000 | 2.0 | 20,000 | 4 | 24,000 | 6.0 | 55 | 245 | 75/20,000 | 550 | 250 | | |
| BB-130 | 10 oz. | 0.28 | 12,000 | 2.5 | 15,000 | 5 | 19,000 | 7.5 | 80 | 355 | 72/15,000 | 800 | 365 | | |
| BB-160 | 16 oz. | 0.45 | 11,000 | 3.0 | 13,000 | 6 | 15,000 | 8.0 | 140 | 625 | 76/13,000 | 1,400 | 635 | | |
| BB-190 | 18 oz. | 0.51 | 10,000 | 4.0 | 12,000 | 7 | 15,500 | 11.0 | 250 | 1,110 | 77/12,000 | 2,500 | 1,135 | | |
| SERIES BV | | | 40 PSI (2.8 Bar) | | 60 PSI (4 Bar) | | 80 PSI (5.5 Bar) | | | | | | @VPM | | |
| BV-60 | 8 oz. | 0.23 | 17,000 | 2.0 | 20,000 | 4 | 24,000 | 6.0 | 55 | 245 | 75/20,000 | 550 | 250 | | |
| BV-130 | 11 oz. | 0.31 | 12,000 | 2.0 | 15,000 | 5 | 19,000 | 7.5 | 80 | 355 | 76/15,000 | 800 | 365 | | |
| BV-190 | 24 oz. | 0.69 | 12,000 | 6.0 | 14,000 | 10 | 16,000 | 11.0 | 260 | 1,160 | 77/12,000 | 2,600 | 1,180 | | |
| BV-250, BV-250AL | 2.8/2.0 | 1.30/0.9 | 9,200 | 8.0 | 10,500 | 11 | 11,000 | 13.0 | 380 | 1,690 | 79/9,200 | 3,800 | 1,725 | | |
| BV-320 | 4.8 | 2.20 | 6,500 | 9.0 | 7,500 | 14 | 8,400 | 17.0 | 480 | 2,135 | 80/6,500 | 4,800 | 2,175 | | |
| BV-380 | 6.2 | 2.80 | 5,500 | 10.0 | 6,200 | 15 | 6,500 | 20.0 | 600 | 2,670 | 82/5,500 | 6,000 | 2,720 | | |
| SERIES V | | | 40 PSI (2.8 Bar) | | 60 PSI (4 Bar) | | 80 PSI (5.5 Bar) | | | | | | @VPM | | |
| V-100 | 8 oz. | 0.23 | 20,000 | 4.0 | 24,000 | 6 | — | — | 55,60 PSI | 245,60 PSI | 75/20,000 | 550,60 PSI | 250,60 PSI | | |
| V-130 | 11 oz. | 0.31 | 15,000 | 5.0 | 19,000 | 7.5 | — | — | 80,60 PSI | 355,60 PSI | 72/15,000 | 800,60 PSI | 365,60 PSI | | |
| V-190 | 26 oz. | 0.74 | 12,000 | 6.0 | 14,000 | 10 | 16,000 | 11.0 | 260 | 1,160 | 73/16,000 | 2,600 | 1,180 | | |
| V-250 | 2.6 | 1.20 | 9,200 | 8.0 | 10,500 | 11 | 11,000 | 13.0 | 380 | 1,690 | 72/11,000 | 3,800 | 1,725 | | |
| V-320 | 4.6 | 2.10 | 7,500 | 12.0 | 8,900 | 14 | 10,000 | 17.0 | 650 | 2,895 | 78/10,000 | 6,500 | 2,950 | | |
| V-380 | 6.2 | 2.80 | 5,500 | 10.0 | 6,200 | 15 | 6,500 | 20.0 | 600 | 2,670 | 78/6,500 | 6,000 | 2,720 | | |

* Decibel from A-scale at 1 meter and given VPM
 ** Rule of thumb for sizing: One lb. vibrator force to each 10 lbs. of bin content at 80 PSI, or max. listed value)
 *** First weight is cast iron housing/second weight is Aluminum housing (AL) signifies aluminum housing

NOTE: • Data obtained on laboratory test block
 • Frequency and force will decrease on less rigid mount
 • Data subject to design changes

VIBCO BB, BV & V SERIES FAST START



This pneumatic ball vibrator is used to keep this product line moving efficiently.

Dimensions

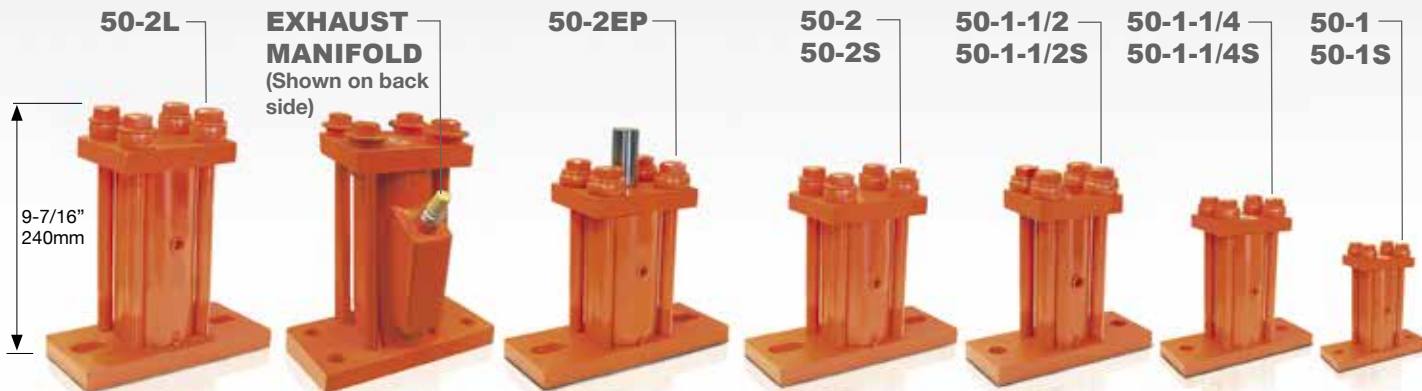
| Model | L | | W | | H | | A** | | B* | | C | | D | | E | | F | | G | | I | | J | | K | | M | |
|--------|-------|-----|---------|----|--------|----|-------|----|------|----|--------|----|--------|----|-------|----|------|----|------|----|-----|-----|------|----|---------|----|-----|----|
| | in. | mm | in. | mm | in. | mm | in. | mm | in. | mm | in. | mm | in. | mm | in. | mm | in. | mm | in. | mm | NPT | NPT | in. | mm | in. | mm | in. | mm |
| BB-100 | 3-1/4 | 83 | 1-11/16 | 43 | 2 | 51 | 1-1/4 | 32 | 5/16 | 8 | 1 | 25 | 7/8 | 22 | 15/16 | 24 | 1/2 | 12 | 9/16 | 14 | 1/8 | 1/8 | 5/16 | 8 | 1-3/8 | 35 | | |
| BB-130 | 3-3/4 | 95 | 1-15/16 | 49 | 2-1/4 | 57 | 1-5/8 | 41 | 3/8 | 10 | 1-3/16 | 30 | 1-1/16 | 27 | 1-1/8 | 29 | 9/16 | 14 | 5/8 | 16 | 1/4 | 1/4 | 5/16 | 8 | 1-9/16 | 40 | | |
| BB-160 | 4-1/8 | 105 | 2 | 51 | 2-9/16 | 65 | 1-3/4 | 44 | 3/8 | 10 | 1-1/4 | 32 | 1-1/4 | 32 | 1-1/4 | 32 | 3/4 | 19 | 3/4 | 19 | 1/4 | 1/4 | 3/8 | 10 | 1-13/16 | 46 | | |
| BB-190 | 4-1/8 | 105 | 2 | 51 | 2-9/16 | 65 | 1-3/4 | 44 | 3/8 | 10 | 1-1/4 | 32 | 1-1/4 | 32 | 1-1/4 | 32 | 3/4 | 19 | 3/4 | 19 | 1/4 | 1/4 | 3/8 | 10 | 1-13/16 | 46 | | |

| Model | L | | W | | H | | A** | | B* | | C | | D | | E | | F | | G | | I | | J | |
|--------|---------|-----|---------|----|--------|-----|-----|-----|-----|----|-------|----|--------|----|--------|----|---------|----|--------|----|-----|-----|-----|----|
| | in. | mm | in. | mm | in. | mm | in. | mm | in. | mm | in. | mm | in. | mm | in. | mm | in. | mm | in. | mm | NPT | NPT | in. | mm |
| BV-60 | 3-7/8 | 98 | 1-11/16 | 43 | 2-1/2 | 64 | 3 | 76 | 1/4 | 6 | 5/8 | 16 | 3/4 | 19 | 1-3/16 | 30 | 1-1/4 | 32 | 1-1/4 | 32 | 1/8 | 1/8 | | |
| BV-130 | 4-7/8 | 124 | 1-15/16 | 49 | 2-3/4 | 70 | 4 | 102 | 3/8 | 10 | 3/4 | 19 | 7/8 | 22 | 1-1/4 | 32 | 1-7/16 | 37 | 1-5/16 | 33 | 1/8 | 1/4 | | |
| BV-190 | 5-1/2 | 140 | 2-1/4 | 57 | 3-9/16 | 90 | 4 | 102 | 3/8 | 10 | 9/16 | 14 | 1-1/4 | 32 | 2 | 51 | 1-7/8 | 48 | 2 | 51 | 1/4 | 1/4 | | |
| BV-250 | 6-3/4 | 171 | 2-7/16 | 62 | 4 | 102 | 5 | 127 | 1/2 | 12 | 7/8 | 22 | 1-5/16 | 33 | 2 | 51 | 2-3/16 | 56 | 2-1/8 | 54 | 1/4 | 1/4 | | |
| BV-320 | 6-11/16 | 170 | 2-3/4 | 70 | 4-7/8 | 124 | 5 | 127 | 1/2 | 12 | 1-1/8 | 29 | 1-5/8 | 41 | 3 | 76 | 2-3/4 | 70 | 2-9/16 | 65 | 3/8 | 3/8 | | |
| BV-380 | 7-7/8 | 200 | 2-15/16 | 75 | 5-3/4 | 146 | 6 | 152 | 5/8 | 16 | 1-1/8 | 29 | 2 | 51 | 2-3/4 | 70 | 2-13/16 | 71 | 3 | 76 | 3/8 | 3/8 | | |

| Model | L | | W | | H | | A** | | B* | | C | | D | | E | | F | | G | | H | | I | | J | | K | |
|-------|--------|-----|---------|----|--------|-----|-------|-----|-----|----|------|----|--------|----|-------|----|-------|----|--------|----|---------|-----|-----|-----|-------|----|-----|----|
| | in. | mm | in. | mm | in. | mm | in. | mm | in. | mm | in. | mm | in. | mm | in. | mm | in. | mm | in. | mm | in. | mm | NPT | NPT | in. | mm | in. | mm |
| V-100 | 3-7/8 | 98 | 1-11/16 | 43 | 2 | 51 | 3 | 76 | 1/4 | 6 | 7/16 | 11 | 3/4 | 19 | 1 | 25 | 5/8 | 16 | 1-5/16 | 33 | 1-11/16 | 43 | — | 1/8 | — | — | | |
| V-130 | 4-7/8 | 124 | 1-15/16 | 49 | 2-5/16 | 59 | 4 | 102 | 3/8 | 10 | 7/16 | 11 | 15/16 | 24 | 1-1/4 | 32 | 3/4 | 19 | 1-1/2 | 38 | 1-15/16 | 49 | — | 1/8 | — | — | | |
| V-190 | 5-1/16 | 129 | 2-3/16 | 56 | 3-3/16 | 81 | 4 | 102 | 3/8 | 10 | 9/16 | 14 | 1-5/16 | 3 | 1-3/4 | 44 | 7/8 | 22 | 2 | 51 | 2-5/8 | 67 | 1/4 | 1/4 | — | — | | |
| V-250 | 5-9/16 | 141 | 2-7/16 | 62 | 3-1/2 | 89 | 4 | 102 | 1/2 | 12 | 9/16 | 14 | 1-1/2 | 38 | 1-7/8 | 48 | 3/4 | 19 | 2-1/4 | 57 | 2-15/16 | 87 | 1/4 | 1/4 | — | — | | |
| V-320 | 5-9/16 | 141 | 2-3/4 | 70 | 4-7/8 | 124 | 4 | 102 | 1/2 | 12 | 3/4 | 19 | 1-1/2 | 38 | 2-3/4 | 70 | 1-3/8 | 35 | 2-3/8 | 60 | 4-1/4 | 105 | 3/8 | 3/8 | — | — | | |
| V-380 | 6-3/4 | 171 | 2-15/16 | 75 | 4-7/8 | 124 | 5-1/2 | 140 | 3/8 | 10 | 3/4 | 19 | 2-3/8 | 60 | 2-1/2 | 64 | 1-1/2 | 38 | 2-7/8 | 73 | 3-7/8 | 98 | 3/8 | 3/8 | 1-1/4 | 32 | | |

* Max. mounting bolt diameter ** Alternate bolt patterns available. Consult factory. NOTE: Material, Dimensions & Data subject to change without notice • Dimensions ±1/16"

ALL STEEL MODEL 50 PNEUMATIC FLANGE MOUNTED PISTON



- Exhaust Manifolds, pg 74
- Long Stroke Available

MODEL 50

- All Steel for Extended Life
- Bolt Isolation Design for Longer Life
- Dual Action - Impacting on Both Up and Down Stroke for Added Force

MODEL 55, PISTON AIR

- One Piece Housing Design
- Economical
- Impacting on Down Stroke

Model 50 and 55 standard impact pistons are the most popular piston series because of their high impact linear force, and efficient energy transfer. This assures the flow of materials through bins, chutes, and weigh batchers; compacts powdered and viscous materials in containers or forms; and activates screens and precipitators.

Optional Exhaust Silencer & Dust-proofer reduces exhaust noise and protects working parts of the vibrator in dusty conditions for lower maintenance and prolonged life. Threaded exhaust is ideal for closed or sanitary systems. To place order, use **-EM** suffix.

Model 50-S & 55-S Silent Operating Piston Vibrators are ideal in areas where noise is objectionable because the piston impact is eliminated by a cushion of air at both ends. High thrust oscillatory action permits operation even in low air pressures. Use next larger size when silent units are used in place of impact units.

Model 50-L, extra-long body for high amplitude, high force and lower frequency vibration – best for moving fluffy, low density and wet or sticky materials. Available with Exhaust Silencers. Dust-proofoers are available for lower maintenance and prolonged life.

Model 50-2EP, Extended Piston has a 5/8" stroke and threaded extension for attaching rods or bumpers. Ideal for use on portable tote bins or hoppers.

For greater force, increase piston diameter size - 1", 1-1/4", 1-1/2", 2", 3", also long Stroke (L) version in 2" or 3"

Technical Data - Model 50 & 55

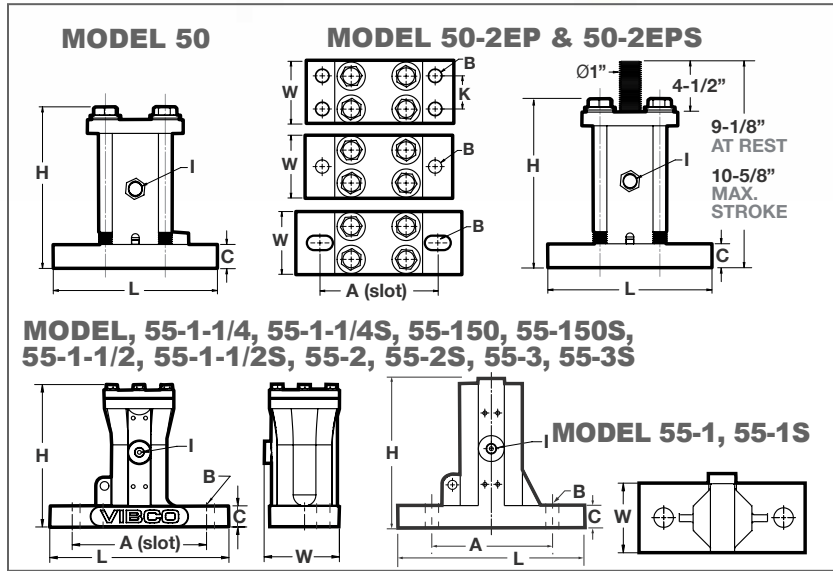
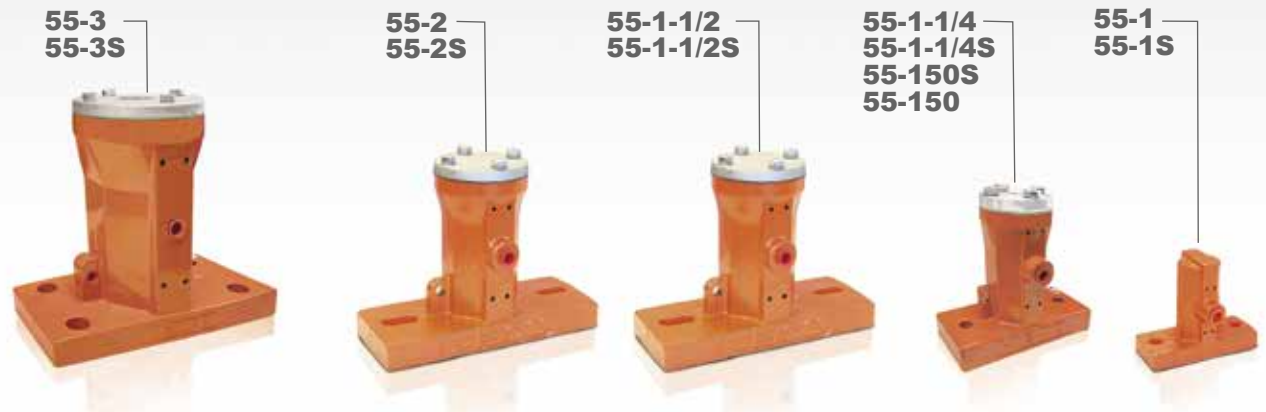
| 50 & 55 Models | Weight | | | | 40 PSI (2.8 Bar) | | 60 PSI (4 Bar) | | 80 PSI (5.5 Bar) | | Max. Weight* of Material in Bin Slope Area | | | |
|----------------|----------|------|----------|------|--------------------|--------------------|--------------------|--------------------|--------------------|--------------------|--|--------|-------|--------|
| | Model 50 | | Model 55 | | Vibration per min. | Cubic ft. per min. | Vibration per min. | Cubic ft. per min. | Vibration per min. | Cubic ft. per min. | lbs. | | kg. | |
| | lbs. | kg. | lbs. | kg. | VPM | CFM | VPM | CFM | VPM | CFM | Min. | Max. | Min. | Max. |
| 1 | 5.0 | 2.3 | 3.5 | 1.6 | 6,500 | 3.5 | 9,000 | 4.0 | 11,000 | 5.0 | 200 | 400 | 90 | 180 |
| 1S** | 5.0 | 2.3 | 3.5 | 1.6 | 3,900 | 3.5 | 5,400 | 4.0 | 6,500 | 5.0 | 100 | 200 | 45 | 90 |
| 1-1/4 | 11.0 | 5.0 | 9.0 | 4.1 | 4,000 | 5.0 | 5,500 | 7.0 | 7,000 | 9.0 | 400 | 1,000 | 180 | 455 |
| 1-1/4S** | 10.0 | 4.5 | 8.0 | 3.6 | 2,400 | 5.0 | 3,300 | 7.0 | 4,200 | 9.0 | 200 | 400 | 90 | 180 |
| 55-150 | — | — | 9.0 | 4.1 | 3,600 | 5.5 | 4,600 | 7.5 | 5,200 | 9.5 | 500 | 2,500 | 225 | 1,150 |
| 55-150S** | — | — | 9.0 | 4.1 | 2,400 | 5.0 | 2,700 | 7.0 | 3,000 | 9.0 | 300 | 700 | 135 | 320 |
| 1-1/2 | 17.0 | 7.7 | 21.0 | 9.5 | 2,800 | 6.5 | 4,000 | 9.0 | 5,200 | 11.0 | 1,000 | 4,000 | 455 | 1,815 |
| 1-1/2S** | 16.0 | 7.3 | 20.0 | 9.1 | 1,700 | 6.5 | 2,400 | 9.0 | 3,200 | 11.0 | 400 | 1,000 | 180 | 455 |
| 2 | 23.0 | 10.4 | 20.0 | 9.1 | 3,200 | 7.5 | 4,000 | 12.0 | 5,000 | 15.0 | 4,000 | 10,000 | 1,815 | 4,535 |
| 2S** | 23.0 | 10.4 | 19.0 | 8.6 | 1,950 | 7.5 | 2,400 | 12.0 | 3,000 | 15.0 | 1,000 | 4,000 | 455 | 1,815 |
| 2L | 26.0 | 11.8 | — | — | 1,600 | 17.0 | 2,000 | 26.0 | 2,400 | 31.0 | 8,000 | 20,000 | 3,630 | 9,070 |
| 2LS** | 25.0 | 11.3 | — | — | 950 | 17.0 | 1,200 | 26.0 | 1,500 | 31.0 | 4,000 | 10,000 | 1,815 | 4,535 |
| 3 | 51.0 | 23.1 | 45.0 | 20.4 | 2,700 | 18.0 | 3,200 | 25.0 | 3,800 | 30.0 | 10,000 | 30,000 | 4,535 | 13,610 |
| 3S** | 50.0 | 22.7 | 44.0 | 20.0 | 1,650 | 18.0 | 1,950 | 25.0 | 2,300 | 30.0 | 8,000 | 20,000 | 3,630 | 9,070 |
| 3L | 62.0 | 28.1 | — | — | 1,350 | 31.0 | 1,500 | 42.0 | 1,700 | 51.0 | 20,000 | 70,000 | 9,070 | 31,750 |
| 3LS** | 61.0 | 27.7 | — | — | 800 | 31.0 | 900 | 42.0 | 1,000 | 51.0 | 10,000 | 30,000 | 4,535 | 13,610 |

* Rule of thumb for sizing: One lb. vibrator force to each 10 lbs. of bin content at 80 PSI

** S indicates Silent, Cushion Impact for quiet operation

NOTE: • Data obtained on laboratory test block
• Frequency and force will vary with quality of air, unit lubrication, and rigidity of mount
• Data subject to design changes

ONE PIECE HOUSING MODEL 55 EXHAUST MANIFOLD - LINEAR FORCE



VIBCO Piston Vibrators provide high impact and efficient energy transfer to ensure a smooth flow of material through bins, chutes, weigh batchers and more.

Springs available for horizontal placements

Dimensions

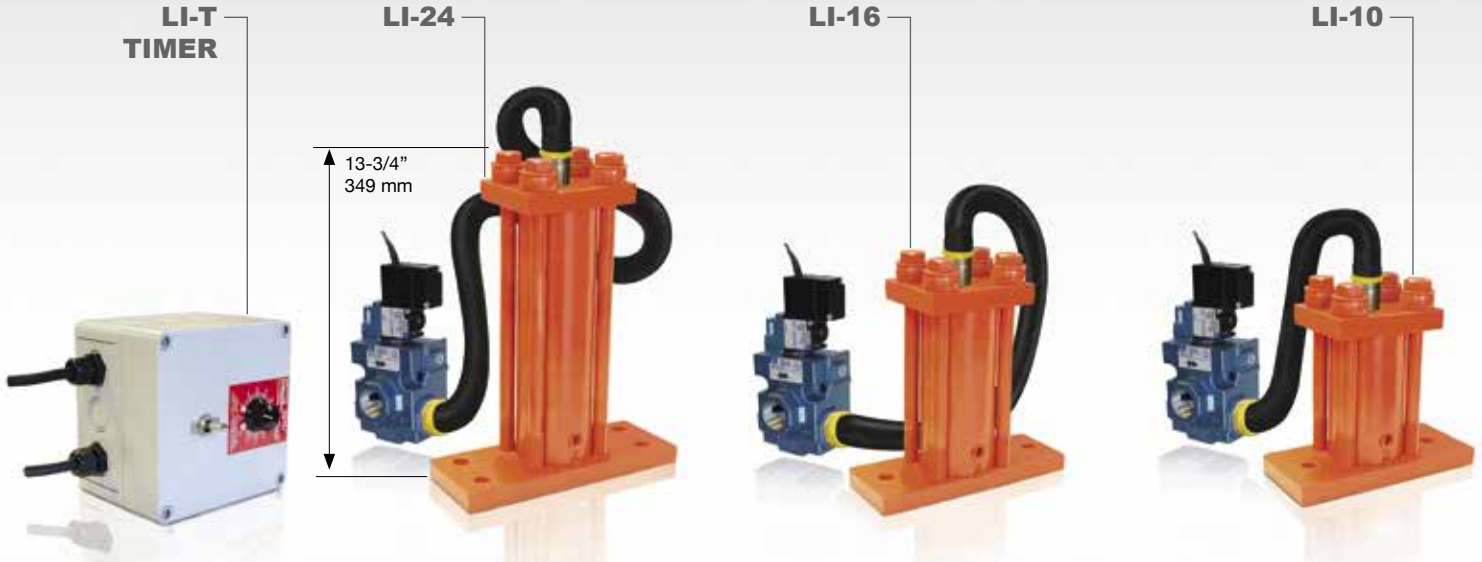
| Model 50 | L | | W | | H | | A** | | B* | | C | | I | K | |
|--------------------|--------|-----|-------|-----|---------|-----|------------|------------|-----|----|-------|----|-----|-------|----|
| | in. | mm | in. | mm | in. | mm | in. | mm | in. | mm | in. | mm | NPT | in. | mm |
| 50-1" | 4-1/2 | 114 | 2 | 51 | 4-9/16 | 116 | 3-1/2 | 89 | 1/2 | 13 | 5/8 | 16 | 1/8 | - | - |
| 50-1-1/4" | 6 | 152 | 2-1/2 | 64 | 6-1/2 | 165 | 4-1/2 | 114 | 1/2 | 13 | 3/4 | 19 | 1/4 | - | - |
| 50-1-1/2" | 7-1/2 | 190 | 3 | 76 | 7-15/16 | 202 | 6 | 152 | 3/4 | 19 | 3/4 | 19 | 1/4 | - | - |
| 50-2" | 9 | 229 | 3-1/2 | 89 | 7-15/16 | 202 | 6 to 7-1/2 | 152 to 191 | 3/4 | 19 | 3/4 | 19 | 1/4 | - | - |
| 50-2L" | 9 | 229 | 3-1/2 | 89 | 9-7/16 | 240 | 6 to 7-1/2 | 152 to 191 | 3/4 | 19 | 3/4 | 19 | 1/4 | - | - |
| 50-2EP | 9 | 229 | 3-1/2 | 89 | † | † | 6 to 7-1/2 | 152 to 191 | 3/4 | 19 | 3/4 | 19 | 3/8 | - | - |
| 50-3" | 10-1/2 | 267 | 4-1/2 | 114 | 10-1/2 | 267 | 8-7/16 | 214 | 3/4 | 19 | 1 | 25 | 1/2 | 2-1/2 | 64 |
| 50-3L" | 10-1/2 | 267 | 4-1/2 | 114 | 13-1/2 | 343 | 8-7/16 | 214 | 3/4 | 19 | 1 | 25 | 1/2 | 2-1/2 | 64 |
| 50-CLE-3L" | 10-1/2 | 267 | 4-1/2 | 114 | 13-1/2 | 343 | 8-7/16 | 214 | 3/4 | 19 | 1 | 25 | 1/2 | 2-1/2 | 64 |
| Model 55 | L | | W | | H | | A** | | B* | | C | | I | K | |
| 55-1" | 4-1/2 | 114 | 2 | 51 | 3-7/8 | 98 | 3-1/2 | 89 | 1/2 | 13 | 5/8 | 16 | 1/8 | - | - |
| 55-1-1/4" & 55-150 | 6 | 152 | 2-1/2 | 64 | 5-5/8 | 143 | 4-1/2 | 114 | 1/2 | 13 | 7/8 | 22 | 1/4 | - | - |
| 55-1-1/2" | 9 | 229 | 3-1/2 | 89 | 7-1/4 | 184 | 6 to 7-1/2 | 152 to 191 | 5/8 | 16 | 1-1/8 | 29 | 1/4 | - | - |
| 55-2" | 9 | 229 | 3-1/2 | 89 | 7-1/4 | 184 | 6 to 7-1/2 | 152 to 191 | 5/8 | 16 | 1-1/8 | 29 | 1/4 | - | - |
| 55-3" | 10-1/2 | 267 | 5 | 127 | 9-7/16 | 240 | 7-3/4 | 197 | 7/8 | 22 | 1-1/8 | 29 | 3/8 | 3-1/4 | 83 |

* Max. mounting bolt diameter
† See 50-2EP Diagram

** Range of size indicates slotted mounting holes
Alternate bolt patterns available. Consult factory.

NOTE: • Material, Dimensions & Data subject to change without notice
• Dimensions ±1/16"

SINGLE IMPACT MODEL LI PNEUMATIC FLANGE MOUNT PISTONS

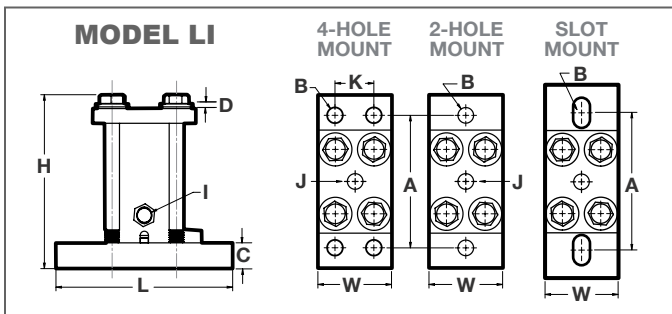


Model LI is a high energy impactor with adjustable impacts which are controlled through air pressure, a timer and solenoid. Low in operating cost – used to break up material bridges and ratholes in bins, hoppers, chutes, feeders, etc. Units are shipped with plug over NPT Outlet. Remove before using. If needed, piston can be accessed from the top of the unit with removal of 4 bolts.

Optional equipment includes: Timer, solenoid, lubricator, hose assembly, recommended high flow muffler (to prevent finger injury), filter/regulator, ball valve, mounting channel, mounting hardware.



The LI Piston is used when a single impact is needed. Force and frequency adjustable by use of air pressure regulator and field adjustable timer.



Dimensions

| Model | PISTON DIA. | | L | | W | | H | | A** | | B* | | C | | D | | I | | J | | K | |
|---------|-------------|----|--------|-----|-------|-----|---------|-----|------------|-----|-----|----|-----|----|------|----|-----|-----|-------|----|-----|----|
| | in. | mm | in. | mm | in. | mm | in. | mm | in. | mm | in. | mm | in. | mm | in. | mm | NPT | NPT | in. | mm | in. | mm |
| LI-10-I | 1-1/4 | 32 | 6 | 152 | 2-1/2 | 64 | 8-3/4 | 217 | 4-1/2 | 114 | 1/2 | 13 | 3/4 | 22 | 3/8 | 10 | 1/2 | 3/8 | - | - | - | - |
| LI-16-I | 2 | 51 | 9 | 229 | 3-1/2 | 89 | 9-1/4 | 235 | 6 to 7-1/2 | 152 | 3/4 | 19 | 3/4 | 19 | 9/16 | 14 | 1/2 | 1/2 | - | - | - | - |
| LI-24-I | 3 | 76 | 10-1/2 | 267 | 4-1/2 | 114 | 13-9/16 | 344 | 8-7/16 | 214 | 3/4 | 19 | 1 | 25 | 3/8 | 10 | 1/2 | 1/2 | 2-1/2 | 64 | - | - |

* Max. mounting bolt diameter
 ** Available with larger base plate. Range of size indicates slotted mounting holes. Alternate bolt patterns available. Consult factory.

NOTE: • Material, Dimensions & Data subject to change without notice
 • Dimensions ±1/16"
 • Engineered dimensional drawings available on request

Technical Data

| LI Models | Weight | | 80 PSI (5.5 Bar) Max. | | | | | Max. Weight* of Material in Bin Slope Area | |
|-----------|--------|------|---------------------------|----------------------|---------------------------|--------------------------|----------------------|--|--------|
| | lbs. | kg. | Max Pulse Rate per Minute | Cubic Ft. per Stroke | Max. Cubic ft. per Minute | Energy per Impact ft/lbs | Energy per Impact Nm | lbs. | kg. |
| LI-10-I | 11.8 | 5.4 | 200 | 0.014 | 2.80 | 14 | 19.0 | 10,000 | 4,535 |
| LI-16-I | 23.6 | 10.7 | 160 | 0.019 | 3.04 | 48 | 65.1 | 20,000 | 9,070 |
| LI-24-I | 57.5 | 26.1 | 110 | 0.049 | 5.39 | 98 | 132.9 | 60,000 | 27,215 |

* Rule of thumb for sizing: One lb. vibrator force to each 10 lbs. of bin content at 80 (maximum) PSI

NOTE: • Data obtained on laboratory test block
 • Varied air pressure will change force. Frequency is controlled by the timer
 • Data subject to design changes

MODEL MP-50, MP-62, MP-75 END MOUNTED MINI PISTONS



- Threaded Inlet & Exhaust Port
- Air Discharge Through Exhaust Manifold
- Quiet, Meets OSHA Standards
- Steel Core Construction for Long Life
- Fits Competitive Brands

The MP Series features a lightweight aluminum body. The steel piston glides in a steel interior cylinder for long life expectancy. The MP line supplies a linear force which is particularly good for small feeder applications.

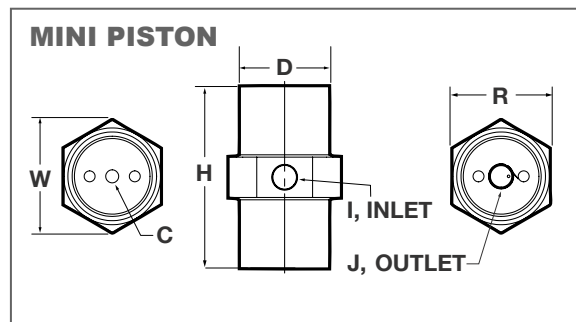
The MP Series is light in weight. It's high force to weight output makes it ideal for all type of applications in parts feeding and chemical industries.

For clean room applications, like in laboratories, the discharge port can be equipped with an air hose leading away exhaust air.

Pressure as low as 20-30 psi will operate the piston. MP units can operate in any position.

Mini Pistons require lubrication for long life.

With it's high force to weight output, an MP unit (shown right) is perfect for feeders.



Technical Data

| Model | Weight | | 30 PSI (2 Bar) | | 60 PSI (4 Bar) | | 90 PSI (6.2 Bar) | | Sound* |
|-------|--------|------|-----------------|----------------|-----------------|----------------|------------------|----------------|--------|
| | lbs. | kg. | Vibration /min. | Cubic ft./min. | Vibration /min. | Cubic ft./min. | Vibration /min. | Cubic ft./min. | |
| MP-50 | 0.75 | 0.34 | 4000 | 0.02 | 5400 | 0.14 | 6400 | 0.65 | 50 |
| MP-62 | 1.00 | 0.45 | 3400 | 0.15 | 4500 | 0.98 | 5500 | 1.75 | 55 |
| MP-75 | 1.50 | 0.68 | 2600 | 0.20 | 3300 | 1.75 | 4000 | 3.00 | 65 |

* Decibel from A-scale at 1 meter and 90 PSI
 NOTE: • Data obtained on laboratory test block
 • Varied air pressure and quality will change force. Frequency is controlled by the timer
 • Data subject to design changes
 • Quality of air effects longevity.

Dimensions

| Model | PISTON DIAMETER | | H LENGTH | | H (S)** LENGTH | | H (L)** LENGTH | | D DIAMETER | | R HEX | | W WIDTH | | C MOUNT | | I INLET | J* OUTLET | |
|-------|-----------------|----|----------|-----|----------------|----|----------------|-----|------------|----|-------|----|---------|----|-----------|---|---------|-----------|-----|
| | in. | mm | in. | mm | in. | mm | in. | mm | in. | mm | in. | mm | in. | mm | SAE | mm | NPT | NPT | |
| | | | | | | | | | | | | | | | | | SAE | mm | NPT |
| MP-50 | 1/2 | 13 | 3-3/16 | 81 | 2-13/16 | 71 | 3-11/16 | 94 | 1-3/8 | 35 | 1-1/2 | 38 | 1-3/4 | 44 | 1/4" - 20 | Metric threads available, consult VIBCO | 1/8 | 1/4 | |
| MP-62 | 5/8 | 16 | 3-11/16 | 94 | 3-3/16 | 81 | 4-5/16 | 109 | 1-9/16 | 40 | 1-3/4 | 44 | 2 | 51 | 3/8" - 16 | | 1/8 | 1/4 | |
| MP-75 | 3/4 | 19 | 4-9/16 | 116 | 3-7/8 | 98 | 5-5/16 | 135 | 1-7/8 | 48 | 2 | 51 | 2-5/16 | 59 | 1/2" - 13 | | 1/8 | 1/4 | |

* Contact VIBCO for thread options. Metric threads available.
 ** These units can also be supplied on special order with small length H(S) or longer H(L). Consult factory.

NOTE: • Material, Dimensions & Data subject to change without notice
 • Dimensions ±1/16"
 • Engineered dimensional drawings available on request

PNEUMATIC END MOUNTED PISTON VIBRATOR



MODEL 10 END MOUNTED PISTON VIBRATOR: Single attaching head is the basic unit for foundry match plate applications. Available in 5/8, 3/4, 1, 1-1/4, & 1-1/2" piston diameter.

MODEL 30 END MOUNTED PISTON VIBRATOR: Double attaching head for core box machines and applications needing more vibration transfer.

MODEL 40 END MOUNTED PISTON VIBRATOR: Stud head vibrator ideal for easy movability on small concrete forms or bins.

MODEL 44 WEDGE HEAD VIBRATOR: Railroad carshakers have wedge bracket to fit railroad car's female "dove-tail" bracket. Available in 3". See page 58 and 59 for additional Railroad Carshakers.

MODEL 70 END TAPPED VIBRATOR: End tapped with SAE or Metric Thread for attaching to threaded rod or stud. Model 70 can be supplied in many variations; silent (air cushioned) or impacting (piston hitting end cap) with exhaust port for attaching a muffler or air hose to lead off exhausting air. The all-steel construction assures a long life. Model 70 is an inexpensive solution for moving material in small bins and hoppers as well as screens and small feeders. Force and frequency will vary with air pressure. To order, specify SAE or Metric thread; S is for Silent Units and EM is for Exhaust Manifold if required.

MODEL 80: END MOUNTED PISTON VIBRATOR - "BIG RED": The new revolutionary lightweight all-steel design makes it the most inexpensive unit for the big bin or hopper job, without sacrificing the quality of

the more expensive flange mounted units. The single bolt attachment makes them easy and fast to install. The "BIG RED" is supplied either with a silent (air cushioned) piston or the more powerful impacting (piston hitting end cap) standard unit.

O-rings cover the air exhaust holes keeping dust and dirt out of the piston-cylinder avoiding scoring and damage to piston and cylinder walls and allowing the units to operate in the worst environments. There are four basic models with piston sizes of 1", 1-1/4", 1-1/2" and 2". For smaller sizes see Model 70. An optional eye bolt for a safety chain can be added to unit's top.

Exhaust Manifolds are available on most units. Consult with VIBCO Engineering for more information.

Technical Data

All pneumatic piston vibrators require lubricated air for proper operation and long life.

| Piston Dia. | 40 PSI (2.8 Bar) | | 60 PSI (4 Bar) | | 80 PSI (5.5 Bar) | | Max. Weight* of Material in Bin Slope Area | | | |
|-------------|------------------|----------------|----------------|----------------|------------------|----------------|--|--------|-------|--------|
| | Vibration/min. | Cubic ft./min. | Vibration/min. | Cubic ft./min. | Vibration/min. | Cubic ft./min. | lbs. | | kg. | |
| | VPM | CFM | VPM | CFM | VPM | CFM | Min. | Max. | Min. | Max. |
| 5/8 | 9,500 | 2.5 | 12,000 | 3.0 | 14,500 | 4.5 | 0 | 100 | 0 | 45 |
| 3/4 | 7,500 | 3.0 | 10,500 | 3.5 | 13,000 | 5.0 | 100 | 200 | 45 | 90 |
| 1 | 6,500 | 3.5 | 9,000 | 4.0 | 11,000 | 5.0 | 200 | 400 | 90 | 180 |
| 1S** | 3,900 | 3.5 | 5,400 | 4.0 | 6,500 | 5.0 | 100 | 200 | 45 | 90 |
| 1-1/4 | 4,000 | 5.0 | 5,500 | 7.0 | 7,000 | 9.0 | 400 | 1,000 | 180 | 455 |
| 1-1/4S** | 2,400 | 5.0 | 3,300 | 7.0 | 4,200 | 9.0 | 200 | 400 | 90 | 180 |
| 1-1/2 | 2,800 | 6.5 | 4,000 | 9.0 | 5,200 | 11.0 | 1,000 | 4,000 | 455 | 1,815 |
| 1-1/2S** | 1,700 | 6.5 | 2,400 | 9.0 | 3,200 | 11.0 | 400 | 1,000 | 180 | 455 |
| 2 | 3,200 | 7.5 | 4,000 | 12.0 | 5,000 | 15.0 | 4,000 | 10,000 | 1,815 | 4,535 |
| 2S** | 1,950 | 7.5 | 2,400 | 12.0 | 3,000 | 15.0 | 1,000 | 4,000 | 455 | 1,815 |
| 2L | 1,600 | 17.5 | 2,000 | 26.0 | 2,400 | 31.0 | 8,000 | 20,000 | 3,630 | 9,070 |
| 2LS** | 950 | 17.5 | 1,200 | 26.0 | 1,500 | 31.0 | 4,000 | 10,000 | 1,815 | 4,535 |
| 3 | 2,700 | 18.0 | 3,200 | 25.0 | 3,800 | 30.0 | 10,000 | 30,000 | 4,535 | 13,610 |
| 3S | 1,650 | 18.0 | 1,950 | 25.0 | 2,300 | 30.0 | 8,000 | 20,000 | 3,630 | 9,070 |

* Rule of thumb for sizing: One lb. vibrator force to each 10 lbs. of bin content at 80 PSI
 ** S indicates Silent, Cushion Impact for quiet operation

NOTE: • Data obtained on laboratory test block
 • Frequency and force will vary with quality of air, unit lubrication, and rigidity of mount
 • Data subject to design changes

MODELS 10, 30, 40, 70, 80 ROUND & HEX HOUSINGS



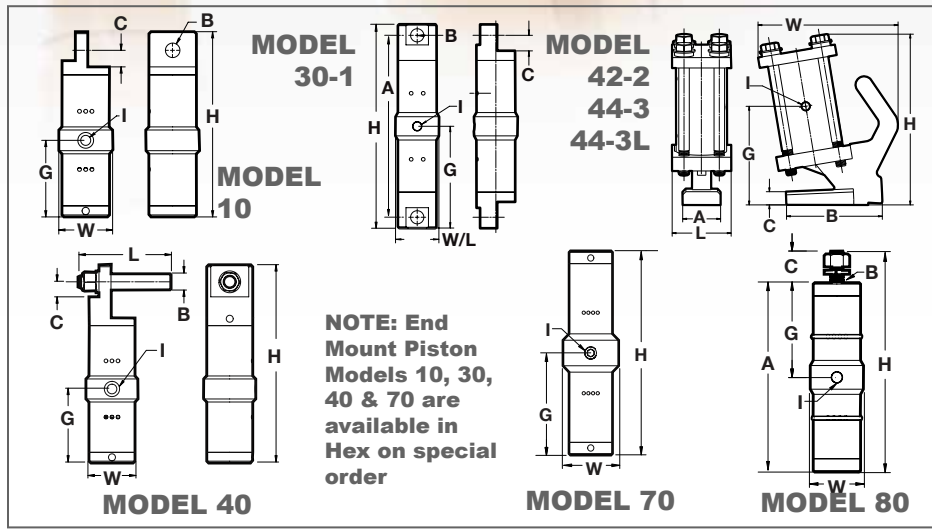
80-2



44-3
44-3L



42-2



Vibrators used in tandem. All pneumatic piston vibrators require lubricated air for proper operation and long life. Low draw units like these 70-1's can share an air line and still run effectively.

Dimensions

| Model | Weight | | L | | W | | H | | A | | B* | C | | G | | I | J | |
|------------|--------|------|---------|-----|--------|------|---------|-----|-------|-----|---------|--------|-------|---------|--------|-----|-------|---|
| | lbs. | kg. | in. | mm | in. | mm | in. | mm | in. | mm | in. | mm | in. | mm | NPT | NPT | | |
| 80 - 1 | 2.1 | 1.0 | 1-5/8 | 41 | 1-5/8 | 41 | 5-7/8 | 149 | - | - | 1/2-20 | 1-1/4 | 32 | 2-5/16 | 59 | 1/8 | - | |
| 80 - 1-1/4 | 5.5 | 2.5 | 2-1/4 | 57 | 2-1/4 | 57 | 9-3/8 | 238 | - | - | 5/8-18 | 1-5/16 | 33 | 4 | 102 | 1/4 | - | |
| 80 - 1-1/2 | 3.8 | 1.7 | 2-1/4 | 57 | 2-1/4 | 57 | 9-5/16 | 237 | - | - | 5/8-18 | 1-5/16 | 33 | 4 | 102 | 1/4 | - | |
| 80 - 2 | 7.8 | 3.5 | 2-1/4 | 57 | 2-1/4 | 57 | 9-5/16 | 237 | - | - | 7/8-15 | 1-3/8 | 35 | 4 | 102 | 1/4 | - | |
| 70 - 5/8 | 1.2 | 0.5 | 1-5/16 | 33 | 1-1/8 | 29 | 4-3/4 | 120 | - | - | 5/16-24 | 3/4 | 19 | 2-3/8 | 60 | 1/8 | 1/4** | |
| 70 - 3/4 | 1.8 | 0.8 | 1-5/8 | 41 | 1-3/8 | 35 | 4-3/4 | 120 | - | - | 3/8-24 | 7/8 | 22 | 2-3/8 | 60 | 1/8 | 1/4** | |
| 70 - 1 | 2.0 | 0.9 | 1-5/8 | 41 | 1-5/8 | 41 | 4-5/8 | 117 | - | - | 1/2-20 | 5/8 | 16 | 2-3/8 | 60 | 1/8 | 1/4** | |
| 70 - 1-1/4 | 5.4 | 2.5 | 2-1/4 | 57 | 2-1/4 | 57 | 8 | 203 | - | - | 1/2-20 | 5/8 | 16 | 4 | 102 | 1/4 | 1/4** | |
| 44-3 | 57.1 | 25.9 | 6 | 152 | 10 | 254 | 13 | 330 | 6 | 152 | - | 1 | 25 | 7-1/2 | 191 | 1/2 | - | |
| 44-3L | 68.5 | 21 | 6 | 152 | 13-1/2 | 34.3 | 15-3/4 | 400 | 6 | 152 | - | 1 | 25 | 9 | 229 | 1/2 | - | |
| 42-2 | 27.1 | 12.3 | 3-1/2 | 89 | 8-3/8 | 213 | 11-1/2 | 292 | 2-1/4 | 57 | - | 3/4 | 19 | 6-15/16 | 177 | 1/4 | - | |
| 40 - 1 | 1.9 | 0.9 | 2-7/8 | 73 | 1-5/8 | 41 | 6-3/16 | 157 | - | - | 1/2 | 13 | 7/16 | 11 | 2-5/16 | 59 | 1/8 | - |
| 40 - 1-1/4 | 6.7 | 3.0 | 6 | 152 | 2-1/4 | 57 | 9-1/2 | 241 | - | - | 1 | 25 | 7/8 | 22 | 4 | 102 | 1/4 | - |
| 30 - 5/8 | 1.5 | 0.7 | 1-1/4 | 32 | 1-1/8 | 29 | 6-5/16 | 160 | 5-3/8 | 137 | 5/16 | 8 | 1/2 | 12 | 3-1/8 | 79 | 1/8 | - |
| 30 - 3/4 | 2.2 | 1.0 | 1-1/4 | 32 | 1-1/4 | 32 | 6-5/16 | 160 | 5-3/8 | 136 | 3/8 | 10 | 1/2 | 12 | 3-3/16 | 81 | 1/8 | - |
| 30 - 1 | 2.3 | 1.0 | 1-7/8 | 48 | 1-5/8 | 41 | 6-9/16 | 167 | 5-3/8 | 162 | 3/8 | 10 | 1/2 | 12 | 3-1/4 | 83 | 1/8 | - |
| 30 - 1-1/4 | 6.2 | 2.8 | 2-5/16 | 59 | 2-1/4 | 57 | 10-1/2 | 267 | 9-1/8 | 232 | 1/2 | 13 | 3/4 | 19 | 5-1/4 | 133 | 1/4 | - |
| 30 - 1-1/2 | 7.5 | 3.4 | 2-1/4 | 57 | 2-1/4 | 57 | 11-3/8 | 289 | 9-1/2 | 241 | 5/8 | 16 | 7/8 | 22 | 5-3/8 | 137 | 1/4 | - |
| 10 - 5/8 | 1.4 | 0.6 | 1-5/16 | 33 | 1-1/4 | 32 | 5-1/2 | 140 | - | - | 5/16 | 8 | 1/2 | 12 | - | - | 1/8 | - |
| 10 - 3/4 | 2.1 | 1.0 | 1-5/8 | 41 | 1-5/8 | 41 | 5-1/2 | 140 | - | - | 3/8 | 10 | 1/2 | 12 | - | - | 1/8 | - |
| 10 - 1 | 2.1 | 1.0 | 1-7/8 | 48 | 1-7/8 | 48 | 5-5/8 | 143 | - | - | 3/8 | 10 | 1/2 | 12 | - | - | 1/8 | - |
| 10 - 1-1/4 | 5.8 | 2.6 | 2-5/16 | 59 | 2-5/16 | 59 | 9-1/4 | 235 | - | - | 1/2 | 13 | 11/16 | 18 | - | - | 1/4 | - |
| 10 - 1-1/2 | 7.0 | 3.2 | 2-15/16 | 75 | 2-1/2 | 64 | 9-11/16 | 246 | - | - | 5/8 | 16 | 7/8 | 22 | - | - | 1/4 | - |

* Max. mounting bolt diameter

NOTE: Material, Dimensions & Data subject to change without notice • Dimensions ±1/16"

HIGH FREQUENCY PNEUMATIC CONVENTIONAL MODELS SVR, SVRF



- Can be Designed to Start in Any Position
- High Frequency, High Force
- Patented Silent Design
- Patented “Air Saver” Chamber
- Patented Wear Plates

Vibco features two models: The “SILENT” and a “conventional” “High Frequency Pneumatic Vibrator.”

HOW IT WORKS - CONVENTIONAL SVR A rotor spins around the shaft in a circular race. The **SILENT SVRS** spin freely and silently in a circular race. Additional muffler pads in the outer End Cover dampen the noise of the exhausting air.

CONVENTIONAL SVR Units are simple in design and low cost with a dB reading of 95 to 110. **SILENT SVRLS** units perform with a dB reading of 80-85.

VIBCO Patented designs feature;

1. Will start **EVERY TIME** by just cracking the air line valve open. No blast of air is necessary.
2. The Patented **WEAR PLATE** between rotor and end cover is made out of spring steel and will not wear, assuring a long maintenance free operation, avoiding costly end cover repairs.



The SVRL Units shown here are being used to consolidate a concrete retaining wall. The Lug Bracket also shown, makes it an ideal solution for portability.

3. The Patented **AIR SAVER CHAMBER** does not exhaust all the compressed air before the next cycle which lowers the units air consumption.

Ask for Catalog #0103 External Walls and Columns or Catalog #8401 Handbook & Equipment Guide External Concrete Vibration.

Technical Data

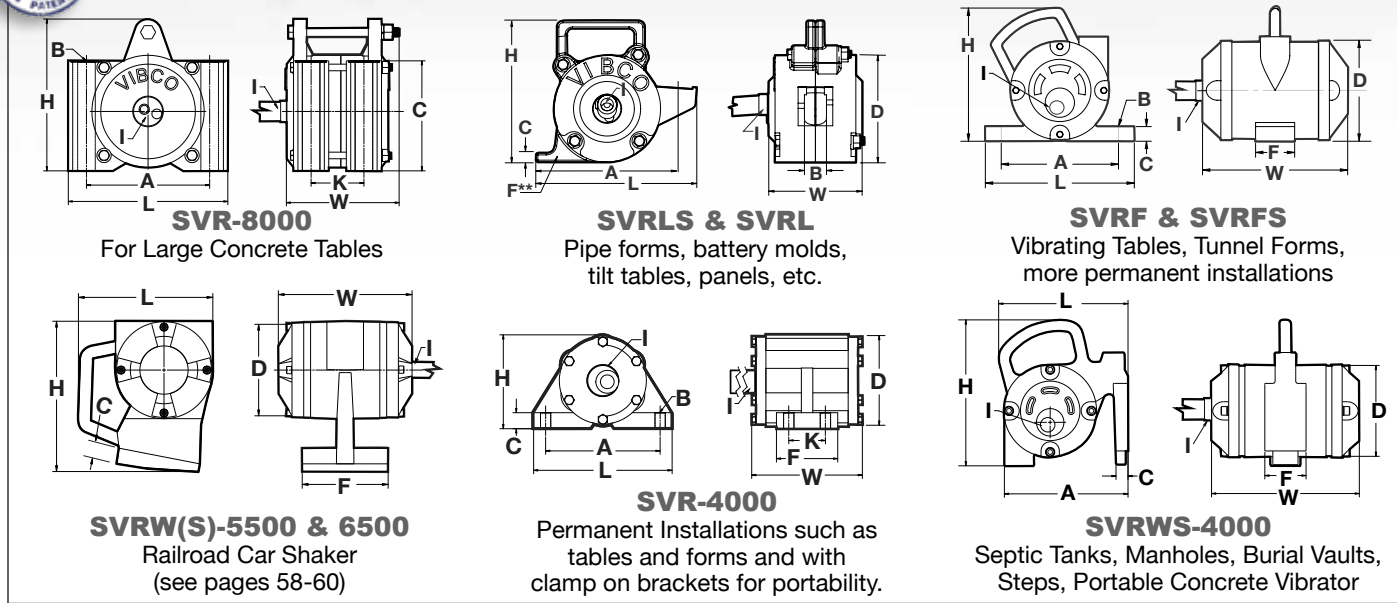
| Model | Weight*** | | 80 PSI (5.5 Bar) | | | 90 PSI (6.2 Bar) | | | 100 PSI (6.9 Bar) | | | Cubic ft. /min. | Sound* |
|---|---------------|------------------|------------------|-------------------|---------|------------------|-------------------|---------|-------------------|-------------------|---------|-----------------|----------|
| | | | Vibration /min. | Centrifugal Force | | Vibration /min. | Centrifugal Force | | Vibration /min. | Centrifugal Force | | | |
| | lbs. | kg. | VPM | lbs. | Newtons | VPM | lbs. | Newtons | VPM | lbs. | Newtons | CFM | dB |
| SVRFS-2000, SVRFS-2000AL SVRWS-2000 | 19 20 | 8.62 9.07 | 11,500 | 3,600 | 16,000 | 12,500 | 4,000 | 17,800 | 13,500 | 4,400 | 19,500 | 40 | 78 |
| SVRFS-4000, -4000AL, SVRLS-4000 SVR-4000 | 22/17.6 23 | 10.0/8.0 10.4 | 11,500 | 3,600 | 16,000 | 12,500 | 4,000 | 17,800 | 13,500 | 4,400 | 19,500 | 40 | 78 90 |
| SVRLS-5500 SRL-5500 | 43 33 | 19.5 15.0 | 9,000 | 4,950 | 22,000 | 10,000 | 5,500 | 24,500 | 10,500 | 6,100 | 27,100 | 56 | 78 82 |
| SVRLS-6500 SRL-6500 | 45 39 | 20.4 17.8 | 8,800 | 5,575 | 24,800 | 9,500 | 6,500 | 28,900 | 10,000 | 7,200 | 32,000 | 58 | 80 98 |
| SVRL-6500SRLSP | 39 | 17.8 | 8,200 | 5,500 | 27,500 | 10,000 | 7,700 | 34,500 | 13,000 | 13,000 | 58,000 | 62 | 98 |
| SVRLS-8000 SVR-8000 | 47 51 | 21.3 23.1 | 8,500 | 7,625 | 33,900 | 8,700 | 8,000 | 35,600 | 9,500 | 9,550 | 42,500 | 62 | 82 98 |
| SVRWS-4000 | 23 | 10.4 | 11,500 | 3,600 | 16,000 | 12,500 | 4,000 | 17,800 | 13,500 | 4,400 | 19,500 | 40 | 78 |
| SVRWS-5500 | 60 | 27.5 | 10,000 | 4,950 | 22,000 | 10,000 | 5,500 | 24,500 | 10,500 | 6,100 | 27,100 | 56 | 82 |
| SVRWS-6500 | 61 | 28.0 | 8,800 | 5,545 | 24,800 | 9,500 | 6,500 | 28,900 | 10,000 | 7,200 | 32,000 | 58 | 85 |

* Decibel from A-scale at 1 meter and 90 PSI.

*** First weight is cast iron housing/second weight is Aluminum housing (AL) signifies aluminum housing

NOTE: • Data obtained on laboratory test block
• Frequency and force will vary with quality of air, unit lubrication, and rigidity of mount
• Data subject to design changes

SILENT MODELS SVRS SVRFS, SVRLS, SVRWS



Dimensions

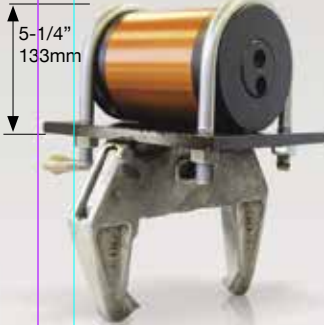
| Model | L | | W | | H | | A | | B* | | C | | D | | F** | | K | | I |
|--|---------|-----|--------|-----|-------|-----|-------|-----|-------|----|-------|-----|-------|-----|--------|-----|-------|----|--------|
| | in. | mm | in. | mm | in. | mm | in. | mm | in. | mm | in. | mm | in. | mm | in. | mm | in. | mm | SAE |
| SVR-4000 | 7-1/2 | 191 | 6-1/8 | 156 | 5 | 127 | 6-1/4 | 159 | 1/2 | 12 | 7/8 | 22 | 4-7/8 | 124 | 3-7/16 | 87 | 2 | 51 | 5/8-18 |
| SVR-5500 | 7 | 178 | 6-1/16 | 154 | 7-3/8 | 187 | 7 | 178 | - | - | 3/4 | 19 | 5-3/8 | 137 | 3-1/2 | 89 | - | - | 5/8-18 |
| SVRL-5500, 6500 SVRL-6500SRLSP | 9-1/2 | 241 | 6-1/8 | 156 | 9-1/4 | 235 | 8 | 203 | 1 | 25 | 3/4 | 19 | 6-1/2 | 165 | 1-1/4 | 32 | - | - | 5/8-18 |
| SVRF-5500 | 10-1/4 | 260 | 6-1/8 | 156 | 8-1/8 | 206 | 8 | 203 | 3/4 | 19 | 1-1/8 | 29 | 5-3/8 | 137 | 3-1/4 | 83 | - | - | 5/8-18 |
| SVR-8000 | 9-3/8 | 238 | 6-3/8 | 162 | 9 | 229 | 7 | 178 | 3/4 | 19 | 6-1/2 | 165 | - | - | 3-1/8 | 79 | 3-1/2 | 89 | 5/8-18 |
| SVRFS-2000, -4000 | 7-11/16 | 195 | 7-3/8 | 187 | 7-1/8 | 181 | 6 | 152 | 11/16 | 17 | 3/4 | 19 | 5-1/8 | 130 | 2-1/16 | 52 | - | - | 5/8-18 |
| SVRLS-2000, -4000 | 7 | 178 | 8 | 203 | 7-1/2 | 190 | 6 | 152 | 3/4 | 19 | 1/2 | 13 | 5 | 127 | 1-1/4 | 32 | - | - | 5/8-18 |
| SVRLS-5500, 6500, 8000 | 9-1/2 | 241 | 8-1/16 | 205 | 9-1/4 | 235 | 7-3/4 | 197 | 1 | 25 | 3/4 | 19 | 6-3/8 | 162 | 1-1/4 | 32 | - | - | 5/8-18 |
| SVRWS-4000 | 7-3/4 | 197 | 8-1/16 | 205 | 6-7/8 | 175 | 5-1/8 | 130 | - | - | 1 | 25 | 5-1/8 | 130 | 2-3/16 | 56 | - | - | 5/8-18 |
| SVRW(S)-5500, 6500 Rail Road Car Shaker | 8-5/8 | 219 | 8-5/8 | 219 | 9-7/8 | 251 | 11 | 279 | - | - | 1-1/8 | 29 | 6-1/8 | 156 | 5-1/2 | 140 | - | - | 5/8-18 |

* Max. mounting bolt diameter
** Foot width

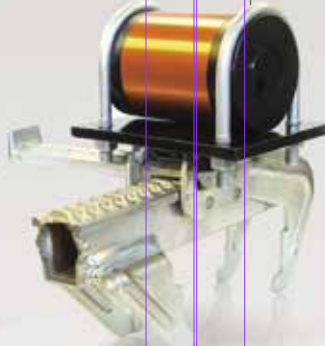
NOTE: • Material, Dimensions & Data subject to change without notice
• Dimensions ±1/16"
• All units use a 3/4" hose with 5/8-18 SAE threads supplied by VIBCO

HIGH FREQUENCY MODEL SVRX PNEUMATIC CONCRETE FORM VIBRATORS

SVRX works with MEVA
Bracket by Other



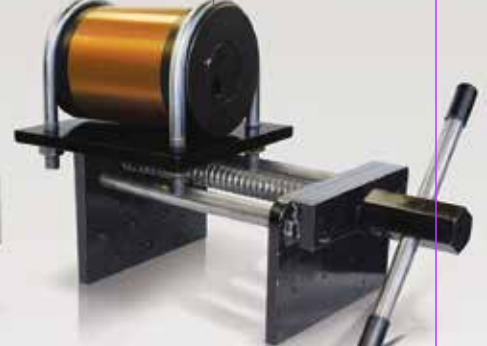
SVRX works with PERI
Bracket by Other



SVRX works with DOKA
Bracket by Other



SVRX works with ANY FORM
Bracket by VIBCO



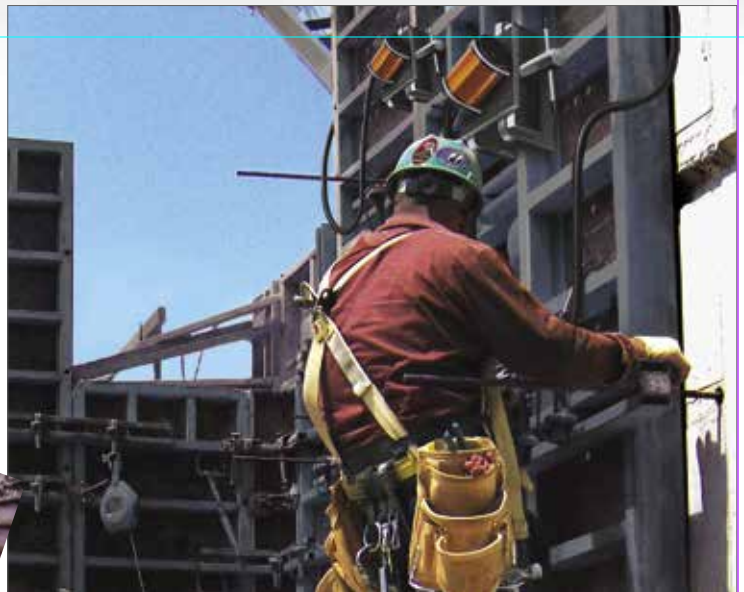
VIBCO's
In-line Lubricator

- **Low Cost**
- **Fits Every Concrete Form System on the Market Today**
- **Light in Weight and Easy to Move from Form to Form or Job Site to Job Site**
- **Compact design means less storage required when idle.**
- **Starts Every Time regardless of position**
- **Patented Wear Plates for Long Life**

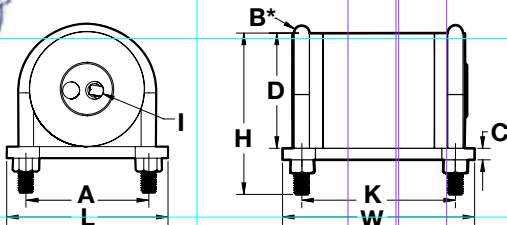
MODEL SVRX comes with mounting bracket to be welded onto the customer's MEVA, PERI, DOKA form brackets or welded on permanently to form stiffeners. The SVRX was designed to fit any form bracket used by the form manufacturer. It is light weight and made an integral part of the bracket and is easy to move from position to position on the form. Their low cost makes them affordable to be permanently mounted on the form eliminating someone continually having to move them. The patented "Start every time" feature makes the unit start by just cracking the air valve. Other units on the market require a blast of air for starting. The patented "Wear plate design" assures the unit of long, maintenance free life and eliminates costly end plate repairs.

Ask for
Catalog
#0103

Ask for
VIBCO's
Concrete
Handbook



VIBCO's standard SVRX-4000 provides up to 8" of vibration penetration at 9-11000 VPM. Using 80 to 120 PSI air pressure, the SVRX 4000 produces 4000 lbs. of force. Lubrication is necessary for long life. Ask about VIBCO's in-line lubricators.



Technical Data

| Model | 80 PSI (5.5 Bar) | | 100 PSI (6.9 Bar) | | 120 PSI (8.3 Bar) | | | | | |
|------------------|------------------|-------------------------|-----------------------|-------------------------|-----------------------|-------------------------|-----------------------|----------------------|-------|---------|
| | Weight | Vibra- tion /min. | Cubic ft. /min. | Vibra- tion /min. | Cubic ft. /min. | Vibra- tion /min. | Cubic ft. /min. | Centrifugal Force | | |
| | lbs. | kg. | VPM | CFM | VPM | CFM | VPM | CFM | lbs. | Newtons |
| SVRX-4000 | 19 | 8.6 | 9,000 | 28 | 10,000 | 32 | 11,000 | 38 | 4,000 | 17,800 |

NOTE: • Data obtained on laboratory test block • Data subject to design changes
• Frequency and force will vary with quality of air, unit lubrication, and rigidity of mount

Dimensions (bracket included)

| Model | L | | W | | H | | A | | B* | | C | | D | | K | | Inlet I |
|------------------|-------|-----|-------|-----|-------|-----|-----|-----|-----|----|-----|----|-------|----|-----|-----|---------|
| | in. | mm | in. | mm | in. | mm | in. | mm | in. | mm | in. | mm | in. | mm | in. | mm | SAE |
| SVRX-4000 | 5-1/4 | 133 | 6-1/4 | 159 | 5-1/4 | 133 | 4 | 102 | 1/2 | 13 | 3/8 | 10 | 3-3/4 | 95 | 5 | 127 | 5/8-18 |

* Bolt Size - SAE 1/2-13

NOTE: • Material, Dimensions & Data subject to change without notice
• Dimensions ±1/16"

HIGH FREQUENCY MODEL SVR ON THE JOB APPLICATIONS



Based on years of experience and a great engineering team, VIBCO vibrators are a proven resource. They are designed for harsh concrete construction environments for columns, walls, slabs, foundations, or precast. Below, our **Model SVRFS** (page 30-31) with **Stik-It™ Mount** (page 61) is being used for bridge repair in RI, and at left, mounted onto a concrete column form. Above, our **SVRWS** (page 30-31) is being used with a **UWF bracket** for excellent transfer of vibration. VIBCO has brackets that will work well with any concrete form including wood.



VIBCO PNEUMATIC & HYDRAULIC FORCES TO 3500 LBS.



- Air & Hydraulic
- Forces to 3500 lbs.
- Continuous Duty
- Speeds from 5600 to 9000 VPM
- Adjustable Speed
- Foot & Clamp Mount

HYDRAULIC & PNEUMATIC

PF-3500 & BIG BUSTER PC-3500 (Pneumatic), **HF-3500 & HC-3500** (Hydraulic)

A patented vibration isolating coupling is mounted between the eccentric shaft and the motor drive shaft eliminating any vibration transfer through the shaft. Another vibration isolating coupling is connected between the vibrator housing and the motor housing eliminating all vibration transfer.

Advantages - With this unique patented design, premature failure of the drive unit is eliminated, and the full life can be expected, which will drastically add to the unit life and eliminate costly shutdowns and maintenance costs. The unit can now truly be used continuously which is the BIG advantage over competitive units.

General Features - Big Buster vibrators provide high force at low frequency. They are designed for continuous duty. All models are available in pneumatic or hydraulic drive. Big Buster units are designed with sealed bearings. Airline lubrication is required for the air motor vanes.

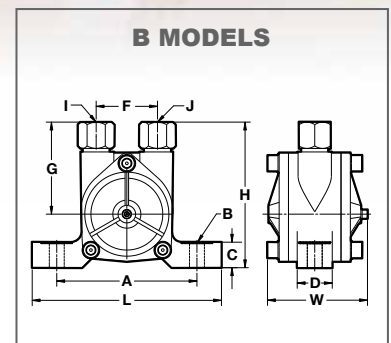
Where to Use? - These units are ideal for the toughest applications from unloading railroad cars to moving materials in bins and hoppers. Precise speed control allows "tuning" of the vibrator for best results in any application. Big Busters are available in clamp on base for portability and bolt-on base for permanent mounting.

HYDRAULIC - VIBCO's hydraulic vibrators operate in any position and are not affected by dirty, muddy or wet locations. They can operate on pressures up to 3000 PSI making them ideal to use with construction equipment for a variety of applications.

MODEL HLF & HL (Hydraulic) The small version of the Big Buster HF-Units are equipped with an internal coupling to maximize the life of the hydraulic motor. These small and powerful high speed 9000 RPM vibrators offer an inexpensive

solution to many material handling problems. HL 3000 same design as the HF - fits LC-1 Lug Bracket. Creates 3000 lbs. force at 4000 RPM - ideal for concrete applications.

MODEL B - PATENTED (Hydraulic) In VIBCO's patented design, hydraulic fluid drives a specially designed & patented turbine wheel producing high frequency vibration with noise levels as low as 60-62 dB at maximum speed. A real low cost unit ideal for O.E.M equipment.



Technical Data

| Pneumatic Models | Weight | | 60 PSI (4 Bar) | | | |
|------------------|---------|------|------------------------|------------------------|-------------------|---------|
| | lbs.*** | kg. | Vibration per min. VPM | Cubic ft. per min. CFM | Centrifugal Force | |
| | | | | | lbs. | Newtons |
| PF-800 | 37 | 17.0 | 4,000 | 11 | 800 | 3,560 |
| PF-1200 | 38 | 17.4 | 3,500 | 21 | 1,200 | 5,340 |
| PF-1500 | 60 | 27.0 | 3,500 | 31 | 1,500 | 6,670 |
| PF-PC-3500L | 71 | 32.2 | 3,500 | 39 | 3,500 | 15,570 |
| PLF-3500 | 40 | 18.1 | 5,400 | 45 | 5,600 | 17,000 |

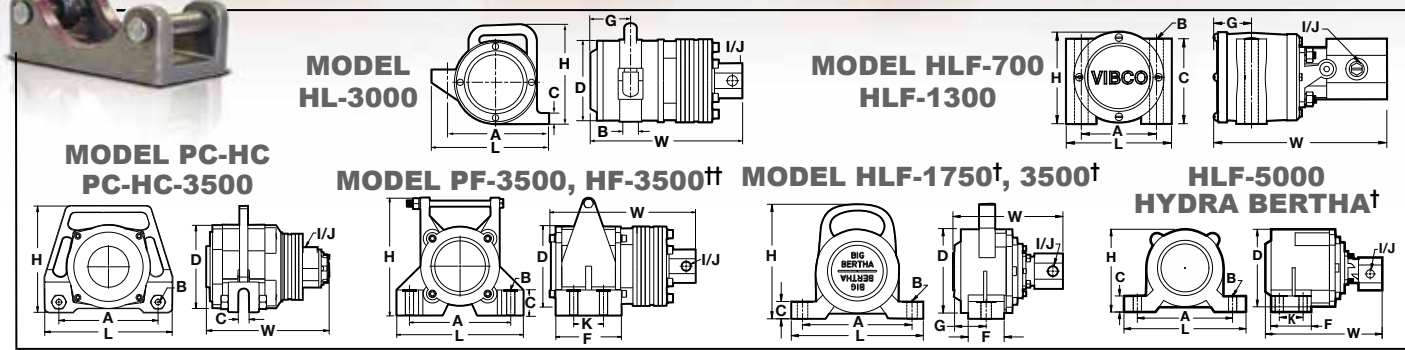
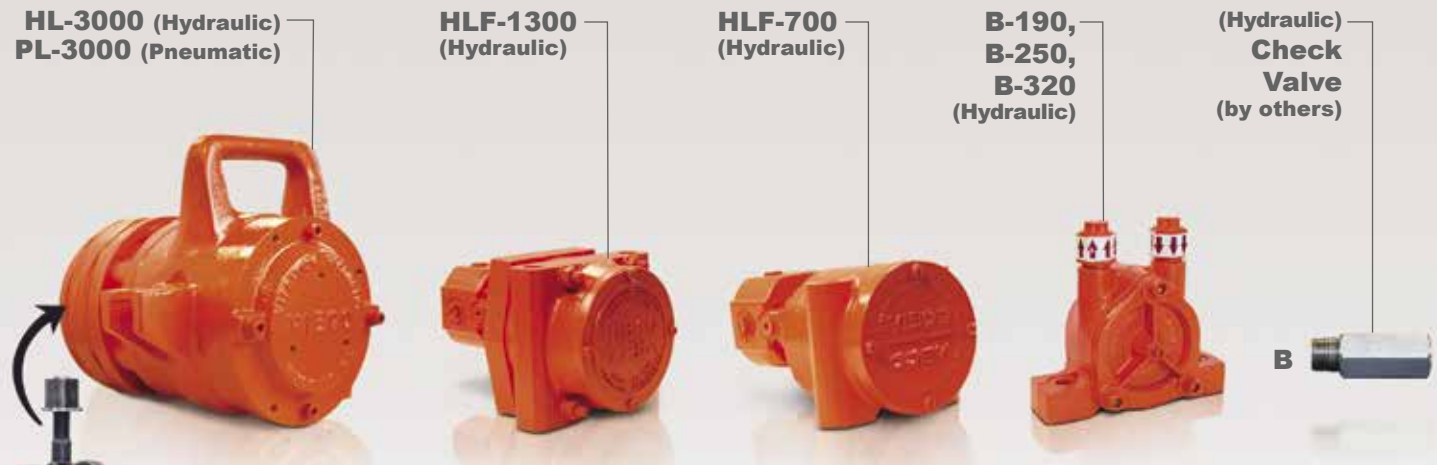
NOTE: Data obtained on laboratory test block • Data subject to design changes • Frequency & force will vary with air quality, unit lubrication, & mount rigidity
 *** First weight is cast iron housing/second weight is Aluminum housing (AL) signifies aluminum housing

| Hydraulic Models | Weight | | 600 PSI (41.4 Bar) | | | | 800 PSI (55.2 Bar) | | | | 1000 PSI (69 Bar) | | | |
|------------------|--------|------|-------------------------|------------------|------------------------|---------------------------|-------------------------|------------------|------------------------|---------------------------|-------------------------|------------------|------------------------|---------------------------|
| | lbs. | kg. | Vibration /min. max VPM | Gallon /min. GPM | Centrifugal Force lbs. | Centrifugal Force Newtons | Vibration /min. max VPM | Gallon /min. GPM | Centrifugal Force lbs. | Centrifugal Force Newtons | Vibration /min. max VPM | Gallon /min. GPM | Centrifugal Force lbs. | Centrifugal Force Newtons |
| B-190 | 1.0 | 0.45 | 4,600 | 4.5 | 190 | 890 | 6,100 | 4.8 | 330 | 80 | 7,400 | 6.5 | 286 | 1,272 |
| B-250 | 2.0 | 0.91 | 4,200 | 4.5 | 280 | 1,245 | 5,000 | 4.5 | 400 | 1,765 | 5,800 | 6.5 | 535 | 2,375 |
| B-320 | 3.5 | 1.60 | 3,700 | 5.0 | 300 | 1,340 | 4,500 | 6.0 | 445 | 1,980 | 5,300 | 7.0 | 615 | 2,745 |

| Hydraulic Models | Weight | | Avg. Pressure PSI | Vibration/min. max VPM | Gallon/min. GPM | Centrifugal Force | | Sound* |
|------------------|--------|------|-------------------|------------------------|-----------------|-------------------|---------|--------|
| | lbs. | kg. | | | | lbs. | Newtons | dB |
| HF-800 | 37 | 17.0 | 600 | 5,000 | 3.2 | 1,300 | 5,785 | 72 |
| HF-1200 | 38 | 17.4 | 800 | 4,500 | 2.9 | 1,900 | 8,450 | 74 |
| HF-1500 | 39 | 17.7 | 900 | 4,000 | 2.6 | 2,000 | 8,900 | 76 |
| HF-HC-3500 | 51 | 23.0 | 1,200 | 3,500 | 2.4 | 3,500 | 15,570 | 80 |
| HL-3000 | 39 | 17.7 | 1,000 | 5,000 | 3.2 | 3,400 | 15,125 | 76 |
| HLF-700 | 14 | 6.5 | 900 | 9,000 | 2.8 | 700 | 3,115 | 72 |
| HLF-1300 | 20 | 9.0 | 1,000 | 9,000 | 2.8 | 1,300 | 5,785 | 72 |
| HLF-1750 | 30 | 14.0 | 1,000 | 5,000 | 2.6 | 2,300 | 10,230 | 72 |
| HLF-3500 | 35 | 16.0 | 1,200 | 4,000 | 2.5 | 3,500 | 15,570 | 72 |
| HLF-5000 | 41 | 18.6 | 1,500 | 4,000 | 2.5 | 4,500 | 20,020 | 72 |

* Decibel from A-scale at 1 meter & avg. PSI (or max. listed value) NOTE: • Data obtained on laboratory test block • Data subject to design changes • Frequency & force will decrease on less rigid mount • Max pressure 3,000 PSI

MODEL B, HL, PF, PLF, PC, HLF, HF, HC



Dimensions

I* (inlet) & J* (exhaust)

| Model | L | | W | | H | | A | | B* | | C | | D | | F | | G | | I* & J* | | K | |
|--------------------|--------|-----|--------|-----|--------|-----|-------|-----|-------|----|--------|----|-------|-----|---------|-----|-------|-----|---------|-------|----|--|
| | in. | mm | in. | mm | in. | mm | in. | mm | in. | mm | in. | mm | in. | mm | in. | mm | in. | mm | NPT | in. | mm | |
| PF-800, 1200, 1500 | 10-3/8 | 264 | 11-1/4 | 286 | 8-3/4 | 222 | 8-1/2 | 216 | 3/4 | 19 | 1-3/8 | 35 | 6-1/2 | 165 | 2-13/16 | 71 | 8-1/2 | 216 | 1/2 | - | - | |
| PF-3500 | 10-3/4 | 273 | 12-5/8 | 321 | 9-1/4 | 235 | 8-1/2 | 216 | 5/8 | 16 | 1-3/8 | 35 | 6-5/8 | 168 | 4-1/8 | 105 | - | - | 1/2 | 2-1/2 | 64 | |
| PC-3500 | 12-1/2 | 318 | 12-1/4 | 311 | 10-3/4 | 273 | 10 | 254 | 1-1/4 | 32 | 1-3/16 | 30 | 6-1/2 | 165 | - | - | - | - | 1/2 | - | - | |
| PLF-3500 | 10-3/8 | 264 | 9-1/2 | 241 | 8-3/4 | 223 | 8-1/2 | 216 | 3/4 | 19 | 1-3/8 | 35 | 6-1/2 | 165 | 2-13/16 | 71 | 5-3/8 | 137 | - | - | - | |

* Max. mounting bolt diameter † See page 48 for more information on Big Bertha units.
 †† PF, HF-800, -1200, & -1500 use compression rings not shown in dimensional drawings. NOTE: Material, dimensions and data subject to change without notice • Dimensions ±1/16"

| Model | L | | W | | H | | A | | B* | | C | | D | | F | | G | | I* & J* | | K | |
|-------|-------|-----|-------|----|-------|-----|-----|-----|-----|-----|-------|----|-------|----|---------|----|-------|----|---------|-----|----|--|
| | in. | mm | in. | mm | in. | mm | in. | mm | in. | mm | in. | mm | in. | mm | in. | mm | in. | mm | NPT | in. | mm | |
| B-190 | 5-1/4 | 133 | 3-1/8 | 79 | 4-5/8 | 117 | 4 | 102 | 3/8 | 104 | 3/4 | 19 | 2-1/2 | 64 | 1-13/16 | 46 | 3 | 76 | 3/8 | - | - | |
| B-250 | 6-3/4 | 171 | 3-5/8 | 92 | 5-3/8 | 137 | 5 | 127 | 1/2 | 13 | 1 | 25 | 3 | 76 | 2-1/4 | 57 | 3-3/8 | 86 | 1/2 | - | - | |
| B-320 | 6-7/8 | 175 | 3-5/8 | 92 | 5-7/8 | 149 | 5 | 127 | 1/2 | 13 | 1-1/8 | 29 | 3-1/2 | 89 | 2-5/8 | 67 | 3-5/8 | 92 | 1/2 | - | - | |

* Max. mounting bolt diameter † See page 48 for more information on Big Bertha units. NOTE: Material, dimensions and data subject to change without notice • Dimensions ±1/16"

| Model | L | | W | | H | | A | | B* | | C | | D | | F | | G | | I* & J* | | K | |
|--------------------|--------|-----|--------|-----|--------|-----|-------|-----|-------|----|--------|-----|-------|-----|---------|-----|-------|-----|---------|-------|----|--|
| | in. | mm | in. | mm | in. | mm | in. | mm | in. | mm | in. | mm | in. | mm | in. | mm | in. | mm | SAE | in. | mm | |
| HF-800, 1200, 1500 | 10-3/8 | 264 | 11-1/4 | 286 | 8-3/4 | 222 | 8-1/2 | 216 | 3/4 | 19 | 1-3/8 | 35 | 6-1/2 | 165 | 2-13/16 | 71 | 8-1/2 | 216 | 3/4-16 | - | - | |
| HF-3500 | 10-3/4 | 273 | 12-5/8 | 321 | 9-1/4 | 235 | 8-1/2 | 216 | 5/8 | 16 | 1-3/8 | 35 | 6-5/8 | 168 | 4-1/8 | 105 | - | - | 3/4-16 | 2-1/2 | 64 | |
| HC-3500 | 12-1/2 | 318 | 12-1/4 | 311 | 10-3/4 | 273 | 10 | 254 | 1-1/4 | 32 | 1-3/16 | 30 | 6-1/2 | 165 | - | - | - | - | 3/4-16 | - | - | |
| HLF-700 | 5 | 127 | 7 | 178 | 4-1/2 | 114 | 3-1/2 | 89 | 1/2 | 13 | 3-7/8 | 98 | - | - | - | - | 2-1/2 | 64 | 9/16-18 | - | - | |
| HLF-1300 | 5-3/4 | 146 | 7-5/8 | 194 | 5 | 127 | 4-1/2 | 114 | 1/2 | 13 | 5 | 127 | - | - | - | - | 2-1/2 | 64 | 9/16-18 | - | - | |
| HL-3000 | 9-1/2 | 241 | 11-1/4 | 286 | 9-1/4 | 235 | 7-3/4 | 197 | 1 | 25 | 3/4 | 19 | 6-1/4 | 159 | - | - | 3-1/8 | 79 | 3/4-16 | - | - | |
| HLF-1750 † | 10-1/4 | 260 | 8-9/16 | 217 | 9 | 229 | 8-1/2 | 216 | 3/4 | 19 | 1-3/8 | 35 | 6-1/2 | 165 | 2-13/16 | 71 | 5-3/8 | 137 | 3/4-16 | - | - | |
| HLF-3500 † | 10-1/4 | 260 | 8-9/16 | 217 | 9 | 229 | 8-1/2 | 216 | 3/4 | 19 | 1-3/8 | 35 | 6-1/2 | 165 | 2-13/16 | 71 | 5-3/8 | 137 | 3/4-16 | - | - | |
| HLF-5000 † | 10-1/4 | 260 | 8-9/16 | 217 | 7 | 178 | 8 | 203 | 3/4 | 19 | 1-3/8 | 35 | 6-1/2 | 165 | 3-5/8 | 92 | - | - | 3/4-16 | 2 | 51 | |

* Max. mounting bolt diameter † See page 48 for more information on Big Bertha units.
 †† PF, HF-800, -1200, & -1500 use compression rings not shown in dimensional drawings. NOTE: Material, Dimensions & Data subject to change without notice • Dimensions ±1/16"

#VIBCO SOLUTIONS

- ▶ **ELECTRIC, PNEUMATIC & HYDRAULIC VIBRATORS**
- ▶ **AIR CANNONS**
- ▶ **RAILROAD CAR SHAKERS**
- ▶ **VIBRATING TABLES**
- ▶ **COMPACTORS & ROLLERS**
- ▶ **ENGINEERED MOUNTING SYSTEMS**



VIBCO®

VIBRATORS

<http://www.VIBCO.com> • vibrators@vibco.com

 #VIBCOsolutions

MADE IN USA 

75 Stilson Road, Wyoming, RI 02898
tel: 401.539.2392 • 800.633.0032

CANADA 

2215 Dunwin Drive, Mississauga, Ont. L5L 1X1
tel: 905.828.4191 • 800.465.9709